

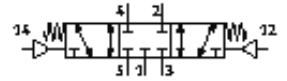
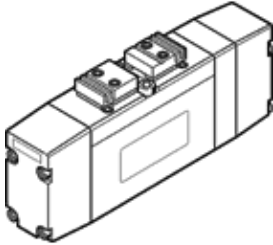
# Pneumatic valve

## VL-5/3G-D-02

Part number: 161085

FESTO

5/3-way function, center position closed  
Type to be discontinued. Available until 2009.



## Data sheet

Feature	Value
Valve function	5/3 closed
Type of actuation	pneumatic
Width	18 mm
Standard nominal flow rate	500 l/min
Working pressure	-0.9 ... 10 bar
Design structure	Piston slide
Type of reset	mechanical spring
Authorization	Germanischer Lloyd
Nominal size	6 mm
Grid dimension	19 mm
Exhaust-air function	throttleable
Sealing principle	soft
Assembly position	Any
Conforms to standard	VDMA 24563
Manual override	None
Type of piloting	direct
Pilot air supply	Internal
Flow direction	reversible
Pilot pressure	3 ... 10 bar
Switching time off	18 ms
Switching time on	9 ms
Operating medium	filtered compressed air, grade of filtration 40 µm, lubricated or unlubricated Vacuum
Corrosion resistance classification CRC	2
Medium temperature	-10 ... 60 °C
Pilot medium	filtered compressed air, grade of filtration 40 µm, lubricated or unlubricated
Ambient temperature	-10 ... 60 °C
Product weight	220 g
Mounting type	with through hole
Pneumatic connection, port 1	Subbase VDMA 24563 size 2
Pneumatic connection, port 2	Subbase VDMA 24563 size 2
Pneumatic connection, port 3	Subbase VDMA 24563 size 2
Pneumatic connection, port 4	Subbase VDMA 24563 size 2
Pneumatic connection, port 5	Subbase VDMA 24563 size 2
Materials information for seals	NBR
Materials information, housing	Aluminum die cast