

Solenoid valve

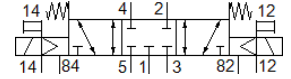
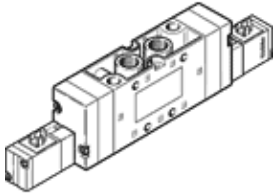
MVH-5/3G-3/8-S-B

Part number: 15346
Classic - do not use for new projects

FESTO

With solenoid coil and manual override, without socket.

Modern alternatives can be found by entering the first four characters of the type code in the search field.



Data sheet

| Feature | Value |
|---|---|
| Valve function | 5/3 closed |
| Type of actuation | electrical |
| Width | 40 mm |
| Standard nominal flow rate | 2,200 l/min |
| Operating pressure MPa | -0.09 ... 1 MPa |
| Working pressure | -0.9 ... 10 bar |
| Design structure | Piston slide |
| Type of reset | mechanical spring |
| Nominal size | 12 mm |
| Grid dimension | 41 mm |
| Exhaust-air function | throttleable |
| Sealing principle | soft |
| Assembly position | Any |
| Manual override | Pushing |
| Type of piloting | Piloted |
| Pilot air supply | external |
| Flow direction | reversible |
| Lap | Positive overlap |
| Pilot pressure MPa | 0.3 ... 1 MPa |
| Pilot pressure | 3 ... 10 bar |
| Max. switching frequency | 3 Hz |
| Switching time off | 89 ms |
| Switching time on | 27 ms |
| Switching time reversal | 57 ms |
| Max. positive test pulse with logic 0 | 2,200 µs |
| Max. negative test pulse with logic 1 | 3,700 µs |
| Characteristic coil data | 24 V DC: 2.5 W |
| Permissible voltage fluctuation | +/- 10 % |
| Operating medium | Compressed air in accordance with ISO8573-1:2010 [7:4:4] |
| Note on operating and pilot medium | Lubricated operation possible (subsequently required for further operation) |
| Corrosion resistance classification CRC | 1 - Low corrosion stress |
| PWIS conformity | VDMA24364-B1/B2-L |
| Storage temperature | -40 ... 60 °C |
| Medium temperature | -5 ... 50 °C |
| Pilot medium | Compressed air in accordance with ISO8573-1:2010 [7:4:4] |
| Ambient temperature | -5 ... 50 °C |
| Product weight | 1,000 g |
| Mounting type | On PR manifold with through hole Optional |
| Auxiliary pilot air port 12 | G1/8 |

| Feature | Value |
|------------------------------|-------------------|
| Auxiliary pilot air port 14 | G1/8 |
| Pilot exhaust port 82 | M5 |
| Pilot exhaust port 84 | M5 |
| Pilot air port 12 | G1/8 |
| Pilot air port 14 | G1/8 |
| Pneumatic connection, port 1 | G3/8 |
| Pneumatic connection, port 2 | G3/8 |
| Pneumatic connection, port 3 | G3/8 |
| Pneumatic connection, port 4 | G3/8 |
| Pneumatic connection, port 5 | G3/8 |
| Materials note | Conforms to RoHS |
| Material seals | NBR |
| Material housing | Aluminum die cast |