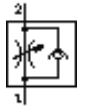
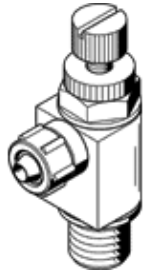


One-way flow control valve GRLZ-1/8-PK-6-RS-B

Part number: 151194

FESTO

For supply air flow control, with swivel joint.



Data sheet

| Feature | Value |
|---|--|
| Valve function | one-way flow control function for supply air |
| Pneumatic connection, port 1 | PK-6 with union nut |
| Pneumatic connection, port 2 | G1/8 |
| Adjusting element | Knurled screw |
| Mounting type | Threaded |
| Standard nominal flow rate in flow control direction | 300 l/min |
| Standard nominal flow rate in non-return direction | 210 ... 290 l/min |
| Working pressure | 0.3 ... 10 bar |
| Ambient temperature | -10 ... 60 °C |
| Operating medium | Filtered, unlubricated compressed air, 40 µm filtration Filtered, lubricated compressed air, 40 µm filtration |
| Assembly position | Any |
| Standard flow rate in direction of flow control: 6 -> 0 bar | 455 l/min |
| Standard flow rate in blocked direction: 6 -> 0 bar | 320 ... 440 l/min |
| Medium temperature | -10 ... 60 °C |
| Max. tightening torque | 6 Nm |
| Product weight | 26 g |
| Materials information for screw-in stud | Wrought Aluminum alloy |
| Materials information for seals | NBR |
| Regulating screw material data | Brass |
| Swivel joint material data | Zinc die-casting |