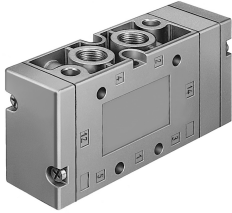


# Pneumatic valve VL-5/3E-3/8-B

Part number: 14949

FESTO



## Data sheet

Feature	Value
Valve function	5/3, exhausted
Actuation type	Pneumatic
Width	40 mm
Standard nominal flow rate	2200 l/min
Pneumatic working port	G3/8
Operating pressure	-0.09 MPa...1 MPa -0.9 bar...10 bar
Structural design	Piston gate valve
Reset method	Mechanical spring
Nominal width	12 mm
Width dimension	41 mm
Exhaust air function	With flow control option
Sealing principle	Soft
Mounting position	Any
Manual override	None
Type of control	Direct
Pilot air supply port	External
Flow direction	Reversible
Lap	Overlap
Pilot pressure MPa	0.3 MPa...1 MPa
Pilot pressure	3 bar...10 bar
Max. switching frequency	3 Hz
Switching time off	28 ms
On switching time	7 ms
Changeover time	83 ms
Operating medium	Compressed air as per ISO 8573-1:2010 [7:4:4]
Information on operating and pilot media	Operation with oil lubrication possible (required for further use)
Corrosion resistance class (CRC)	1 - Low corrosion stress
LABS (PWIS) conformity	VDMA24364-B1/B2-L
Storage temperature	-40 °C...60 °C
Temperature of medium	-10 °C...60 °C
Pilot medium	Compressed air as per ISO 8573-1:2010 [7:4:4]

<b>Feature</b>	<b>Value</b>
Ambient temperature	-10 °C...60 °C
Product weight	680 g
Type of mounting	Optionally: On PR rail With through-hole
Pilot air port 12	G1/8
Pilot air port 14	G1/8
Pneumatic connection 1	G3/8
Pneumatic connection 2	G3/8
Pneumatic connection 3	G3/8
Pneumatic connection 4	G3/8
Pneumatic connection 5	G3/8
Note on materials	RoHS-compliant
Seals material	NBR
Housing material	Die-cast aluminum