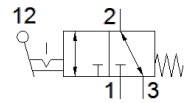


# Swivel lever valve RW/O-3-PK-3

Part number: 10750

FESTO



## Data sheet

Feature	Value
Valve function	3/2 open/closed, monostable
Type of actuation	mechanical
Standard nominal flow rate	80 l/min
Working pressure	0 ... 8 bar
Design structure	Piston seat
Nominal size	2.5 mm
Type of piloting	direct
Operating medium	Compressed air in accordance with ISO8573-1:2010 [-:::]
PWIS conformity	VDMA24364-B1/B2-L
Ambient temperature	-10 ... 60 °C
Mounting type	with through hole
Pneumatic connection, port 1	PK-3
Pneumatic connection, port 2	PK-3
Pneumatic connection, port 3	PK-3
Material seals	NBR
Material housing	POM