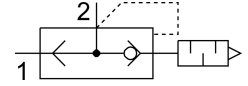


Quick exhaust valve SEU-1/2-NPT

Part number: 9801

FESTO



Data sheet

Feature	Value
Valve function	Quick exhaust
Selection of additional functions	With silencer
Pneumatic connection, port 1	1/2 NPT
Pneumatic connection, port 2	1/2 NPT
Type of mounting	Screw-in
Standard nominal flow rate, exhaust 0.6-0.5 MPa (6-5 bar, 87-72.5 psi)	4020 l/min
Standard nominal flow rate, exhaust 0.6-0 MPa (6-0 bar, 87-0 psi)	6500 l/min
Standard nominal flow rate, air flow 0.6-0.5 MPa (6-5 bar, 87-72.5 psi)	4560 l/min
Operating pressure	0.3 bar...10 bar
Ambient temperature	-20 °C...75 °C
Operating medium	Compressed air to ISO 8573-1:2010 [7:-:-]
Nominal size	15 mm
Note on operating and pilot medium	Lubricated operation possible (in which case lubricated operation will always be required)
LABS (PWIS) conformity	VDMA24364-B1/B2-L
Media temperature	-20 °C...75 °C
Sound pressure level	86 dB(A)
Note on materials	RoHS-compliant