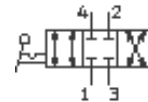
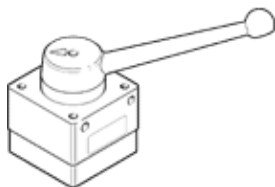


Hand lever valve HS-4/3-1/2-B

Part number: 9784

FESTO

4/3-way valve with hand lever, closed in mid position.
Discontinued, available through 2006
This type is suitable for vacuum. Vacuum connection at port 3 (R).



Data sheet

Feature	Value
Standard nominal flow rate	3,500 l/min
Pneumatic connection, port 2	G1 1/2
Pneumatic connection, port 4	G1 1/2
Operating pressure	-0.95 ... 10 bar
Design structure	Rotary slide valve
Nominal size	12 mm
Ambient temperature	-20 ... 80 °C
Actuating force	26 N
Product weight	1.35 kg
Mounting type	with through hole
Pneumatic connection, port 1	G1 1/2
Pneumatic connection, port 3	G1 1/2
Materials information for seals	NBR
Materials information, housing	Aluminium die cast