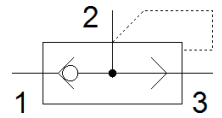
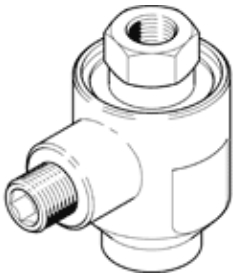


quick exhaust valve

SE-1/2-B

Part number: 9688

FESTO



Data sheet

| Feature | Value |
|--|---|
| Valve function | Quick exhaust |
| Pneumatic connection, port 1 | G1/2 |
| Pneumatic connection, port 2 | G1/2 |
| Mounting type | Threaded |
| Standard nominal flow rate, exhaust 0.6-0.5 MPa (6-5 bar, 87-72.5 psi) | 6,480 l/min |
| Standard nominal flow rate pressurisation 0.6-0.5 MPa (6-5 bar, 87-72.5 psi) | 4,560 l/min |
| Operating pressure | 0.3 ... 10 bar |
| Ambient temperature | -20 ... 75 °C |
| Material housing | Aluminium die cast |
| Operating medium | Compressed air in accordance with ISO8573-1:2010 [7:-:-] |
| Nominal size | 15 mm |
| Assembly position | Any |
| Note on operating and pilot medium | Lubricated operation possible (subsequently required for further operation) |
| PWIS conformity | VDMA24364-B1/B2-L |
| Medium temperature | -20 ... 75 °C |
| Product weight | 200 g |
| Pneumatic connection, port 3 | G1/2 |
| Material seals | NBR |