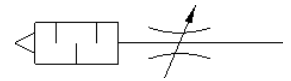
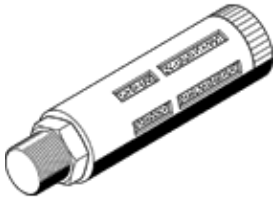


flow control/silencer GRU-1/4-B

Part number: 9517

FESTO

Flow control valve with integrated silencer for exhaust air flow control with certain designs of valves.



Data sheet

Feature	Value
Valve function	Flow control – silencer function
Pneumatic connection, port 1	G1/4
Adjusting element	Slotted head screw
Mounting type	Threaded
Standard flow rate 0.6->0 MPa (6->0 bar, 87->0 psi)	0 ... 1,500 l/min
Ambient temperature	-10 ... 70 °C
Material housing	Aluminium
Assembly position	Any
Operating pressure complete temperature range	0 ... 10 bar
Operating medium	Compressed air in accordance with ISO8573-1:2010 [7:-:-]
Note on operating and pilot medium	Lubricated operation possible
PWIS conformity	VDMA24364-B1/B2-L
Medium temperature	-10 ... 70 °C
Product weight	25 g
Material of silencer insert	PE
Material of threaded plug	Aluminium die cast
Materials note	Conforms to RoHS
Material adjusting screw	PA