

Toggle lever valve

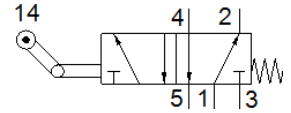
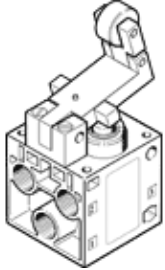
L-5-1/4-B

Part number: 8993

FESTO

With idle return and barbed fitting for 3 mm tubing. Normally-open or normally-closed function depending on choice of connection.

This type is suitable for vacuum.



Data sheet

| Feature | Value |
|------------------------------|--------------------|
| Valve function | 5/2 monostable |
| Type of actuation | mechanical |
| Standard nominal flow rate | 550 l/min |
| Operating pressure | -0.95 ... 10 bar |
| Design structure | Poppet seat |
| Nominal size | 7 mm |
| Type of piloting | direct |
| PWIS conformity | VDMA24364-B1/B2-L |
| Ambient temperature | -10 ... 60 °C |
| Actuating force | 71.5 N |
| Product weight | 360 g |
| Mounting type | with through hole |
| Pneumatic connection, port 1 | G1/4 |
| Pneumatic connection, port 2 | G1/4 |
| Pneumatic connection, port 3 | G1/4 |
| Pneumatic connection, port 4 | G1/4 |
| Pneumatic connection, port 5 | G1/4 |
| Material seals | NBR |
| Material housing | Aluminium die cast |