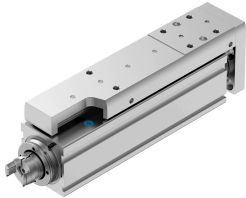


Mini slide EGSC-BS-KF-32-75-3P

Part number: 8162075

FESTO



Data sheet

Feature	Value
Working stroke	75 mm
Size	32
Stroke reserve	0 mm
Reversing backlash theoretical	150 µm
Spindle diameter	8 mm
Spindle pitch	3 mm/U
Mounting position	optional
Guide	Recirculating ball bearing guide
Design	Electric mini slide With ball screw drive
Type of motor	Stepper motor Servo motor
Referencing	Positive fixed stop block Negative fixed stop block Reference switch
Spindle type	Ball screw drive
Position detection	Via proximity switch
Max. acceleration	5 m/s ²
Max. speed	0.188 m/s
Repetition accuracy	±0.015 mm
Duty cycle	100%
Corrosion resistance class CRC	0 - No corrosion stress
LABS (PWIS) conformity	VDMA24364 zone III
Suitability for the production of Li-ion batteries	Metals with more than 1% copper, zinc or nickel by mass are excluded from use. Exceptions are nickel in steel, chemically nickel-plated surfaces, printed circuit boards, cables, electrical plug connectors and coils
Cleanroom class	Class 9 according to ISO 14644-1
Sound pressure level	55 dB(A)
Degree of protection	IP40
Ambient temperature	0 °C...50 °C
Dynamic basic load rating fixed bearing	3795 N
Dynamic basic load rating linear guide	2135 N

Feature	Value
Dynamic basic load rating ball screw	1900 N
Max. force Fy	991 N
Max. force Fz	991 N
Max. moment Mx	3.4 Nm
Max. moment My	3.2 Nm
Max. moment Mz	3.2 Nm
Max. radial force at drive shaft	75 N
Max. feed force Fx	60 N
Reference value effective load, horizontal	6 kg
Reference value effective load, vertical	6 kg
Static basic load rating ball screw	3300 N
Static basic load rating linear guide	3880 N
Mass moment of inertia JH per metre of stroke	0.02488 kgcm ²
Mass moment of inertia JL per kg of working load	0.00228 kgcm ²
Mass moment of inertia JO	0.00394 kgcm ²
Feed constant	3 mm/U
Static basic load rating fixed bearing	1792 N
Reference service life	5000 km
Maintenance interval	Life-time lubrication
Moving mass for 0 mm stroke	149 g
Additional moving mass per 10 mm stroke	12 g
Product weight	557 g
Basic weight for 0 mm stroke	331 g
Additional weight per 10 mm stroke	30 g
Type of mounting	Via female thread Via centring sleeve With accessories Via cylindrical pin
Interface code, actuator	V25
Note on materials	RoHS-compliant
Material guide slide	Rolled steel
Material guide rail	Rolled steel
Material housing	Anodised wrought aluminium alloy
Material yoke plate	Wrought aluminium alloy
Material piston rod	High-alloy stainless steel
Material slide	Anodised wrought aluminium alloy
Material spindle nut	Rolled steel
Material spindle	Rolled steel