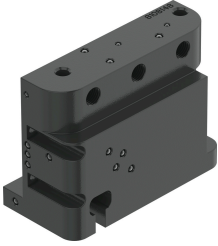


Manifold block CAPS-M1-VDE2-D-A-AL-G14-V

Part number: 8154593

FESTO



Data sheet

Feature	Value
Dimensions (W x L x H)	80 mm x 104 mm x 50 mm
Mode of operation	Double-acting
Design characteristics	Safety pneumatic output 2 exhausted Safety pneumatic output 4 pressurised
Standard nominal flow rate	270 l/min
LABS (PWIS) conformity	VDMA24364 zone III
Product weight	650 g
Type of mounting	To VDI/VDE 3847-2
Pneumatic connection	G1/4
Note on materials	RoHS-compliant
Material screws	High-alloy stainless steel
Material housing	Aluminium, powder-coated