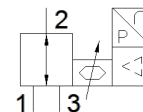


proportional pressure regulator

VEAA-B-3-D2-F-V2-1R1

Part number: 8153642

FESTO



Data sheet

Feature	Value
Valve function	3-way proportional-pressure regulator
Type of piloting	direct
Type of reset	mechanical spring
Type of actuation	electrical
Assembly position	Any
Sealing principle	soft
Ambient temperature	0 ... 50 °C
Medium temperature	5 ... 50 °C
Storage temperature	-20 ... 70 °C
Dimensions W x L x H	15 mm x 61 mm x 66 mm
Pneumatic connection, port 1	Flange
Pneumatic connection, port 2	Flange
Pneumatic connection, port 3	Flange
Material seals	NBR
Mounting type	with through hole with accessories Optional
Supply pressure 1 MPa	0 ... 1.1 MPa
Inlet pressure 1	0 ... 11 bar
Supply pressure 1 psi	0 ... 159.5 psi
Output pressure 2	0.001 ... 0.2 MPa 0.01 ... 2 bar 0.145 ... 29 psi
Standard nominal flow rate	≥ 7 l/min
Standard nominal flow rate 2-3	≥ 3 l/min
Linearity error, FS	0.5 %
Repetition accuracy in ± %FS	0.4 %FS
Hysteresis FS	0.25 %FS
Temperature coefficient	0.05 %/K
Absolute accuracy in ± %FS at room temperature	0.75 %FS
Product weight	55 g
Operating medium	Compressed air in accordance with ISO8573-1:2010 [7:4:4] Inert gases
Note on operating and pilot medium	Lubricated operation not possible
Protection class	IP65
Authorisation	RCM Mark
KC mark	KC-EMV
CE mark (see declaration of conformity)	to EU directive for EMC in accordance with EU RoHS directive
UKCA marking (see declaration of conformity)	To UK instructions for EMC To UK RoHS instructions
Materials note	Conforms to RoHS
PWIS conformity	VDMA24364 zone III
Corrosion resistance classification CRC	2 - Moderate corrosion stress
Operating voltage range DC	19 ... 29 V
Nominal operating voltage DC	24 V

Feature	Value
Residual ripple	10 %
Setpoint value	0 - 5 V
Signal range, analogue output	1 - 5 V
Accuracy, analogue output FS	2 %FS
Max. electrical power consumption	1 W
Polarity protected	for all electrical connections
Short circuit strength	for all electrical connections
Safety instructions	Safety position VEAA/VEAB
Type of display	LED
Electrical connection	4-pin M8x1 Plug to EN 60947-5-2
Material housing	PA-reinforced