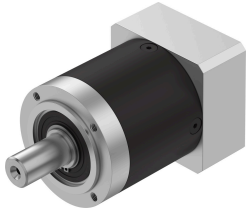


Gear unit EMGA-80-P-G12-EAS-80

Part number: 8141742

FESTO



Data sheet

Feature	Value
Gear unit flange size	80 mm
Motor flange size	80 mm
Torsional backlash	0.15 deg
Type of gear unit	Planetary gear
Gear unit ratio	12:1
Max. drive speed	7000 rpm
Operating temperature of gear unit	-25 °C...90 °C
LABS (PWIS) conformity	VDMA24364-B2-L
Degree of protection	IP54
Continuous output torque	120 Nm
Mass moment of inertia of gear unit	0.589 kgcm ²
Max. output torque	240 Nm
Max. efficiency	97 %
Torsional rigidity	10.2 Nm/arcmin
Product weight	2500 g
Gear unit interface, output shaft	80G
Gear unit interface, drive shaft	80P
Note on materials	RoHS-compliant