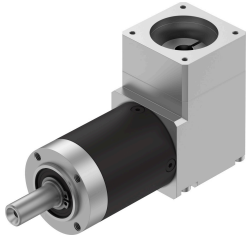


Gear unit EMGA-40-A-G20-40P

Part number: 8141734

FESTO



Data sheet

Feature	Value
Gear unit flange size	40 mm
Motor flange size	40 mm
Torsional backlash	0.41 deg
Type of gear unit	Right-angle gear unit
Gear unit ratio	20:1
Max. drive speed	18000 rpm
Operating temperature of gear unit	-25 °C...90 °C
LABS (PWIS) conformity	VDMA24364-B2-L
Degree of protection	IP54
Continuous output torque	20 Nm
Mass moment of inertia of gear unit	0.035 kgcm ²
Max. output torque	32 Nm
Max. efficiency	92 %
Torsional rigidity	0.8 Nm/arcmin
Product weight	600 g
Gear unit interface, output shaft	40G
Gear unit interface, drive shaft	40P
Note on materials	RoHS-compliant