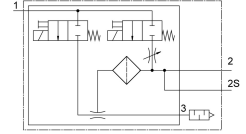
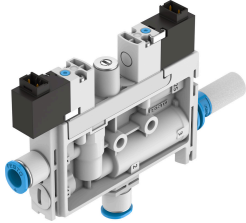


Vacuum generator OVEL-7-H-15-PQ-VQ4-UC-C-A-H3

Part number: 8141100

FESTO



Data sheet

| Feature | Value |
|------------------------------------------------------------------|----------------------------------------------------------------------------------------------|
| Nominal size, Laval nozzle | 0.7 mm |
| Grid dimension | 15 mm |
| Silencer design | Closed |
| Mounting position | optional |
| Ejector characteristic | High vacuum Standard |
| Grade of filtration | 40 µm |
| Manual override | Non-detenting |
| Integrated function | Electric ejector pulse Flow control Electric on-off valve Filter Silencer closed |
| Design | T-shape |
| Valve function | Closed |
| Operating pressure for max. suction flow rate | 0.4 MPa 4 bar 58 psi |
| Operating pressure | 0.2 MPa...0.7 MPa 2 bar...7 bar 29 psi...101.5 psi |
| Operating pressure for max. vacuum | 0.48 MPa 4.8 bar 69.6 psi |
| Max. vacuum | 92 % |
| Nominal operating pressure | 0.4 MPa 4 bar 58 psi |
| Max. suction flow rate against atmosphere | 17 l/min |
| Air supply time at nominal operating pressure with ejector pulse | 1.2 s |
| Operational voltage range DC | 21.6 V...26.4 V |
| Duty cycle | 100% |
| Characteristic coil data | 24 V DC: 1.0 W |
| Approval | c UL us listed (OL) |
| CE mark (see declaration of conformity) | To EU EMC Directive |

| Feature | Value |
|----------------------------------------------------------|-------------------------------------------|
| Operating medium | Compressed air to ISO 8573-1:2010 [7:4:4] |
| Note on operating and pilot medium | Lubricated operation not possible |
| Corrosion resistance class CRC | 2 - Moderate corrosion stress |
| LABS (PWIS) conformity | VDMA24364-B1/B2-L |
| Media temperature | 0 °C...50 °C |
| Sound pressure level at nominal operating pressure | 56 dB(A) |
| Degree of protection | IP40 |
| Ambient temperature | 0 °C...50 °C |
| Product weight | 56 g |
| Electrical connection input, function | Ejector pulse Vacuum generation |
| Electrical connection input, connection type | 2x plug connector |
| Electrical connection input, connector system | Connection pattern H |
| Electrical connection input, number of connections/cores | 2 |
| Input electrical connection, mounting type | Snap-in locking |
| Type of mounting | With through-hole |
| Pneumatic connection, port 1 | For tubing outer diameter of 4 mm |
| Pneumatic connection, port 3 | Silencer closed |
| Vacuum connection | For tubing outside diameter of 4 mm |
| Material connecting thread | POM |
| Note on materials | RoHS-compliant |
| Material seals | NBR |
| Material receiver nozzle | POM |
| Material filter | POM |
| Material housing | PA-reinforced |
| Material adjusting screw | Steel |
| Material silencer | PA-reinforced PE |
| Material screws | Steel |
| Material transmitter nozzle | Wrought aluminium alloy |