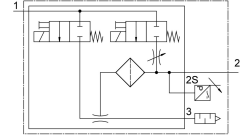
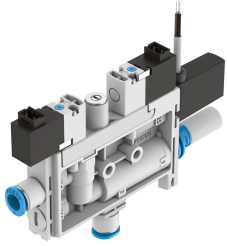


Vacuum generator OVEL-10-H-15-PQ-VQ6-UC-C-A-V1PNLK-H3

Part number: 8141093

FESTO



Data sheet

Feature	Value
Nominal size, Laval nozzle	0.95 mm
Grid dimension	15 mm
Silencer design	Closed
Mounting position	optional
Ejector characteristic	High vacuum Standard
Grade of filtration	40 µm
Manual override	Non-detenting
Integrated function	Electric ejector pulse Flow control Pressure sensor Electric on-off valve Filter Silencer closed
Design	T-shape
Switching element function	N/C or N/O contact, switchable
Switching function	Freely programmable
Valve function	Closed
Measurement method	Piezoresistive pressure sensor with display
Display type	LED indicator 2-digit
Setting options	IO-Link® Teach-in Via display and keys
Operating pressure for max. suction flow rate	0.4 MPa 4 bar 58 psi
Operating pressure	0.2 MPa...0.7 MPa 2 bar...7 bar 29 psi...101.5 psi
Operating pressure for max. vacuum	0.41 MPa 4.1 bar 59.45 psi
Max. vacuum	92 %

Feature	Value
Nominal operating pressure	0.4 MPa 4 bar 58 psi
Max. suction flow rate against atmosphere	21 l/min
Air supply time at nominal operating pressure with ejector pulse	1 s
Operational voltage range DC	21.6 V...26.4 V
Duty cycle	100%
Switching output	PNP/NPN, switchable
Characteristic coil data	24 V DC: 1.0 W
Approval	c UL us listed (OL)
KC mark	KC-EMV
CE mark (see declaration of conformity)	To EU EMC Directive
CE marking (see declaration of conformity)	To UK instructions for EMC
Operating medium	Compressed air to ISO 8573-1:2010 [7:4:4]
Note on operating and pilot medium	Lubricated operation not possible
Corrosion resistance class CRC	2 - Moderate corrosion stress
LABS (PWIS) conformity	VDMA24364-B1/B2-L
Media temperature	0 °C...50 °C
Sound pressure level at nominal operating pressure	56 dB(A)
Degree of protection	IP40
Ambient temperature	0 °C...50 °C
Product weight	92 g
Operating voltage range, DC sensor	18 V...30 V
Pressure measuring range	-0.1 MPa...0 MPa -1 bar...0 bar -14.5 psi...0 psi
Electrical connection input, function	Ejector pulse Vacuum generation
Electrical connection input, connection type	2x plug connector
Electrical connection input, connector system	Connection pattern H
Electrical connection input, number of connections/cores	2
Input electrical connection, mounting type	Snap-in locking
Electrical connection output, function	Sensor
Electrical connection output, connection type	Cable
Electrical connection output, connector system	Open end
Electrical connection output, number of connections/cores	3
Cable characteristic	Suitable for energy chains
Cable diameter	2.9 mm
Cable diameter tolerance	± 0.1 mm
Cable length	2.5 m
Nominal cross section conductor	0.14 mm ²
Type of mounting	With through-hole
Pneumatic connection, port 1	For tubing outer diameter of 4 mm
Pneumatic connection, port 3	Silencer closed
Vacuum connection	For tubing O.D. 6 mm
Cable sheath colour	grey
Material connecting thread	POM
Note on materials	RoHS-compliant
Material seals	NBR
Material receiver nozzle	POM
Material filter	POM
Material housing	PA-reinforced
Material cable sheath	PVC
Material adjusting screw	Steel

Feature	Value
Material silencer	PA-reinforced PE
Material screws	Steel
Material transmitter nozzle	Wrought aluminium alloy