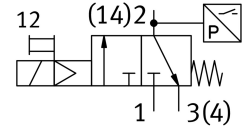
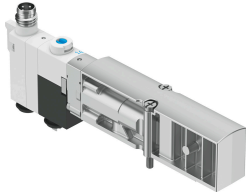


Solenoid valve VMPA14-M1H-IU-PI

Part number: 8126787

FESTO



Data sheet

| Feature | Value |
|------------------------------------|--|
| Valve function | 3/2-way, closed, monostable |
| Type of actuation | Electric |
| Valve size | 14 mm |
| pneumatic working port | G1/8 |
| Operating voltage | 24V DC |
| Operating pressure | 0.3 MPa...0.8 MPa 3 bar...8 bar |
| Design | Poppet valve with spring return |
| Type of reset | Mechanical spring |
| Degree of protection | IP65 In assembled state To IEC 60529 |
| Sealing principle | Soft |
| Mounting position | optional |
| Manual override | Detenting Non-detenting |
| Type of piloting | Pilot actuated |
| Pilot air supply | Internal |
| Flow direction | Non-reversible |
| lap | Underlap |
| Signal status display | yes |
| Pilot pressure | 0.3 MPa...0.8 MPa 3 bar...8 bar |
| Suitability for vacuum | no |
| Permissible voltage fluctuations | +/- 25% |
| Operating medium | Compressed air to ISO 8573-1:2010 [7:4:4] |
| Note on operating and pilot medium | Lubricated operation not possible |
| Vibration resistance | Transport application test with severity level 2 to FN 942017-4 and EN 60068-2-6 |
| Shock resistance | Shock test with severity level 2 to FN 942017-5 and EN 60068-2-27 |
| Corrosion resistance class CRC | 1 - Low corrosion stress |
| LABS (PWIS) conformity | VDMA24364 zone III |
| Storage temperature | -20 °C...60 °C |

| Feature | Value |
|---|-------------------|
| Media temperature | -5 °C...50 °C |
| Relative air humidity | Max. 90% at 40°C |
| Ambient temperature | -5 °C...50 °C |
| Max. tightening torque for valve mounting | 0.25 Nm |
| Product weight | 36 g |
| Type of mounting | With through-hole |
| Pilot exhaust port 82/84 | Internal |
| Pneumatic connection, port 1 | Internal |
| Pneumatic connection, port 2 | Internal |
| Pneumatic connection, port 3 | G1/8 |
| Note on materials | RoHS-compliant |
| Material seals | HNBR NBR |
| Material housing | PPA reinforced |
| Material screws | Coated steel |