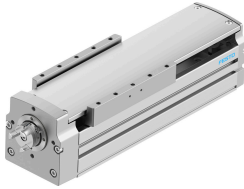


# Spindle axis ELGT-BS-90-100-10P

Part number: 8124401

FESTO



## Data sheet

Feature	Value
Working stroke	100 mm
Size	90
Stroke reserve	0 mm
Reversing backlash theoretical	150 µm
Spindle diameter	16 mm
Spindle pitch	10 mm/U
Mounting position	optional
Guide	Recirculating ball bearing guide
Design	Electromechanical linear axis With ball screw
Type of motor	Stepper motor Servo motor
Spindle type	Ball screw
Variants	Metals with copper, zinc or nickel as main constituent are excluded from use. Exceptions are nickel in steel, chemically nickel-plated surfaces, printed circuit boards, cables, electrical plug connectors and coils.
Max. acceleration	15 m/s <sup>2</sup>
Max. rotational speed	3000 rpm
Max. speed	0.5 m/s
Repetition accuracy	±0.02 mm
Duty cycle	100%
LABS (PWIS) conformity	VDMA24364 zone III
Suitability for the production of Li-ion batteries	Metals with more than 1% copper, zinc or nickel by mass are excluded from use. Exceptions are nickel in steel, chemically nickel-plated surfaces, printed circuit boards, cables, electrical plug connectors and coils
Cleanroom class	Class 6 according to ISO 14644-1
Degree of protection	IP20
Ambient temperature	0 °C...50 °C
Continuous feed force	1054 N
2nd moment of area ly	631000 mm <sup>4</sup>
2nd moment of area lz	1948000 mm <sup>4</sup>
Idle torque at v <sub>max</sub>	0.3 Nm

Feature	Value
Idle torque at v <sub>min</sub>	0.08 Nm
Max. force F <sub>y</sub>	4710 N
Max. force F <sub>z</sub>	5600 N
F <sub>y</sub> at theoretical life value of 100 km (only guide consideration)	17352 N
F <sub>z</sub> at theoretical life value of 100 km (only guide consideration)	20631 N
Max. moment M <sub>x</sub>	65 Nm
Max. moment M <sub>y</sub>	51 Nm
Max. moment M <sub>z</sub>	51 Nm
M <sub>x</sub> at theoretical life value of 100 km (only guide consideration)	239 Nm
M <sub>y</sub> at theoretical life value of 100 km (only guide consideration)	188 Nm
M <sub>z</sub> at theoretical life value of 100 km (only guide consideration)	188 Nm
Max. radial force at drive shaft	290 N
Max. feed force F <sub>x</sub>	1054 N
Torsional mass moment of inertia I <sub>t</sub>	151000 mm <sup>4</sup>
Mass moment of inertia J <sub>H</sub> per metre of stroke	0.3453 kgcm <sup>2</sup>
Mass moment of inertia J <sub>L</sub> per kg of working load	0.0253 kgcm <sup>2</sup>
Mass moment of inertia J <sub>O</sub>	0.1252 kgcm <sup>2</sup>
Feed constant	10 mm/U
Moving mass	1628 g
Product weight	5422 g
Basic weight for 0 mm stroke	4380 g
Additional weight per 10 mm stroke	104 g
Dynamic deflection (moving load)	0.05% of the axis length, max. 0.5 mm
Static deflection (load in standstill)	0.1% of the axis length
Interface code, actuator	T46
Material end cap	Painted die cast aluminium
Material profile	Anodised wrought aluminium alloy
Note on materials	RoHS-compliant
Material drive cover	Painted die cast aluminium
Material guide slide	Steel
Material guide rail	Steel
Material slide	Anodised wrought aluminium alloy
Material spindle nut	Steel
Material spindle	Steel