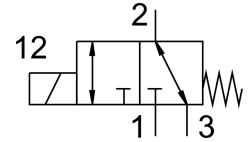
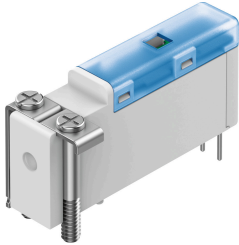


# Solenoid valve VOVK-BT6-M32C-MN-5T1P-FB

Part number: 8122776

FESTO



## Data sheet

| Feature                            | Value                                                             |
|------------------------------------|-------------------------------------------------------------------|
| Valve function                     | 3/2-way, closed, monostable                                       |
| Type of actuation                  | Electric                                                          |
| Construction width                 | 5.9 mm                                                            |
| Standard nominal flow rate         | 5.5 l/min                                                         |
| pneumatic working port             | Sub-base                                                          |
| Operating pressure                 | -0.1 MPa...0.7 MPa<br>-1 bar...7 bar<br>-14.5 psi...100 psi       |
| Note on operating pressure         | Operating pressure at port 3: -1 to 0 bar only                    |
| Design                             | Connection direction downwards<br>Poppet valve with spring return |
| Type of reset                      | Mechanical spring                                                 |
| Degree of protection               | IP40                                                              |
| Nominal size                       | 0.36 mm                                                           |
| Exhaust-air function               | With flow control option                                          |
| Sealing principle                  | Soft                                                              |
| Mounting position                  | optional                                                          |
| Manual override                    | None                                                              |
| Type of piloting                   | Electric                                                          |
| Flow direction                     | Reversible                                                        |
| Cv value                           | 0.006 Gal/min US                                                  |
| Max. switching frequency           | 10 Hz                                                             |
| Switching time off                 | 6 ms                                                              |
| Note on switching time off         | At $-1 < p < 6$ bar                                               |
| Switching time on                  | 13 ms                                                             |
| Note on switching time on          | $\leq 6$ ms at $0 < p < 6$ bar, $\leq 13$ ms at $-1 < p < 0$ bar  |
| Duty cycle                         | 100% within 500 h                                                 |
| Electrical power consumption       | 0.5 W                                                             |
| Nominal operating voltage DC       | 12 V                                                              |
| Permissible voltage fluctuations   | +/- 10 %                                                          |
| Operating medium                   | Compressed air to ISO 8573-1:2010 [6:4:1]                         |
| Note on operating and pilot medium | Lubricated operation not possible                                 |

| <b>Feature</b>                 | <b>Value</b>               |
|--------------------------------|----------------------------|
| Corrosion resistance class CRC | 1 - Low corrosion stress   |
| LABS (PWIS) conformity         | VDMA24364 zone III         |
| Media temperature              | 5 °C...50 °C               |
| Relative air humidity          | 70%                        |
| Note on relative air humidity  | At ambient temperature     |
| Ambient temperature            | 5 °C...50 °C               |
| Product weight                 | 4.5 g                      |
| Electrical connection          | 2-pin                      |
| Type of mounting               | With through-hole          |
| Pneumatic connection, port 1   | Sub-base                   |
| Pneumatic connection, port 3   | Sub-base                   |
| Note on materials              | RoHS-compliant             |
| Material housing               | PBT                        |
| Material spring                | High-alloy stainless steel |