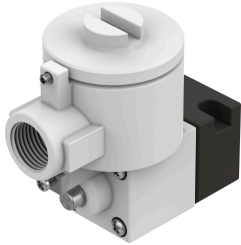


Pilot valve MGXDH-3/2-1.2-110AC-KS

Part number: 8118343

FESTO



Data sheet

| Feature | Value |
|---|--|
| Valve function | 3/2-way, closed, monostable |
| Type of actuation | Electric |
| Operating pressure | -0.09 MPa...0.8 MPa -0.9 bar...8 bar -13.05 psi...116 psi |
| Design | On/off valve |
| Type of reset | Mechanical spring |
| Certificate issuing authority | 21-GA4BO-0068X 21-GA4BO-0069X |
| Explosion ignition protection type for gas | Ex db IIC T6...T3 Gb |
| Explosion ignition protection type for dust | Ex tb IIIC T85°C Db |
| Explosion ambient temperature | -65°C ~+40°C T4 -65°C ~+55°C T3 |
| Degree of protection | IP66 |
| Manual override | Detenting |
| Flow direction | Non-reversible |
| Duty cycle | 100% |
| Insulation material class | H |
| Characteristic coil data | 110 V AC: 50/60 Hz, initial power: 79.5 VA, holding power: 3.8 VA |
| Permissible frequency fluctuations | +/- 10% |
| Operating medium | Compressed air to ISO 8573-1:2010 [7:4:4] |
| Note on operating and pilot medium | Lubricated operation possible (in which case lubricated operation will always be required) |
| Corrosion resistance class CRC | 2 - Moderate corrosion stress |
| LABS (PWIS) conformity | VDMA24364 zone III |
| Ambient temperature | -20 °C...80 °C |
| Type of mounting | CNOMO |
| Note on materials | RoHS-compliant |