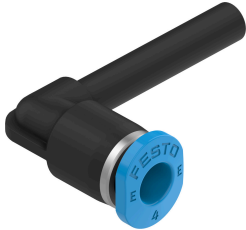


# Push-in L-connector NPQE-L-Q4-S4-P10

Part number: 8113194

FESTO



## Data sheet

Feature	Value
Size	Mini
Nominal size	2.5 mm
Mounting position	optional
Design	L-shape Push-pull principle
Size of pack	10
Operating pressure complete temperature range	-0.095 MPa...0.8 MPa -0.95 bar...8 bar -13.775 psi...116 psi
Operating medium	Compressed air to ISO 8573-1:2010 [7:4:4]
Note on operating and pilot medium	Lubricated operation possible
Corrosion resistance class CRC	1 - Low corrosion stress
LABS (PWIS) conformity	VDMA24364 zone III
Cleanroom class	Class 4 according to ISO 14644-1
Ambient temperature	-5 °C...60 °C
Product weight	1.41 g
Pneumatic connection, port 1	For tubing outer diameter of 4 mm
Pneumatic connection, port 2	Push-in sleeve Ø 4 mm
Colour of release ring	Blue
Note on materials	RoHS-compliant
Material housing	PBT
Material release ring	POM
Material tubing seal	NBR
Material tubing clamp component	Stainless steel