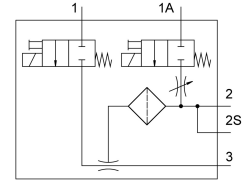
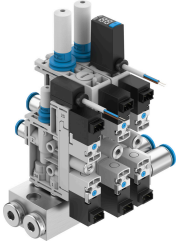


Vacuum generator OVTL

Part number: 8103599

FESTO



Data sheet

Feature	Value
Nominal size, Laval nozzle	0.45 mm...0.95 mm
Grid dimension	10 mm...15 mm
Silencer design	Open
Number of device positions	2 ...8
Mounting position	optional
Ejector characteristic	High suction rate High vacuum Standard
Grade of filtration	40 µm
Manual override	Non-detenting
Integrated function	Electric ejector pulse Flow control Pressure sensor Pressure transmitter Electric on-off valve Filter Open silencer
Design	For connection position on both sides For connection position on the side
Switching element function	N/C or N/O contact, switchable
Switching function	Freely programmable
Valve function	Closed
Display type	LED indicator 2-digit
Operating pressure for max. suction flow rate	3 bar...6 bar
Operating pressure	0.2 MPa...0.7 MPa 2 bar...7 bar 29 psi...101.5 psi
Operating pressure for max. vacuum	3.8 bar...4.5 bar
Max. vacuum	89 %...92 %
Nominal operating pressure	0.4 MPa 4 bar 58 psi
Max. suction flow rate against atmosphere	4 l/min...45 l/min
Air supply time at nominal operating pressure with ejector pulse	0.4 s...2 s

Feature	Value
Analogue output	0 - 10 V 1 - 5 V
Operational voltage range DC	21.6 V...26.4 V
Duty cycle	100%
Switching output	PNP/NPN, switchable
Characteristic coil data	24 V DC: 1.28 W 24 V DC: 1.0 W
Approval	c UL us listed (OL)
CE mark (see declaration of conformity)	To EU EMC Directive
CE marking (see declaration of conformity)	To UK instructions for EMC
Operating medium	Compressed air to ISO 8573-1:2010 [7:4:4]
Note on operating and pilot medium	Lubricated operation not possible
Corrosion resistance class CRC	2 - Moderate corrosion stress
LABS (PWIS) conformity	VDMA24364-B1/B2-L
Media temperature	0 °C...50 °C
Sound pressure level at nominal operating pressure	52 dB(A)...68 dB(A)
Degree of protection	IP40
Ambient temperature	0 °C...50 °C
Product weight	118 g...890 g
Operating voltage range, DC sensor	10 V...30 V
Pressure measuring range	-0.1 MPa...0 MPa -1 bar...0 bar -14.5 psi...0 psi
Electrical connection input, function	Ejector pulse Vacuum generation
Electrical connection input, connection type	2x plug connector
Electrical connection input, connector system	Connection pattern H
Electrical connection input, number of connections/cores	2
Input electrical connection, mounting type	Snap-in locking
Electrical connection output, function	Sensor
Electrical connection output, connection type	Cable
Electrical connection output, connector system	Open end
Electrical connection output, number of connections/cores	3
Cable characteristic	Suitable for energy chains
Cable diameter tolerance	± 0.1 mm
Cable length	2.5 m
Type of mounting	With through-hole
Pneumatic connection, port 1	Female thread G1/8 For tubing outside diameter of 6 mm For tubing outer diameter of 8 mm
Pneumatic connection, port 3	For tubing O.D. 4 mm For tubing O.D. 6 mm Open silencer
Vacuum connection	For tubing O.D. 3 mm For tubing outside diameter of 4 mm For tubing O.D. 6 mm
Cable sheath colour	grey
Material connecting thread	POM
Note on materials	RoHS-compliant
Material sub-base	Wrought aluminium alloy
Material seals	NBR
Material receiver nozzle	POM
Material filter	POM
Material housing	PA-reinforced
Material hollow bolt	Wrought aluminium alloy
Material adjusting screw	Steel

Feature	Value
Material silencer	PA-reinforced
Material screws	Steel
Material transmitter nozzle	Wrought aluminium alloy
Material fitting	Nickel-plated brass