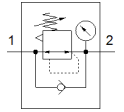
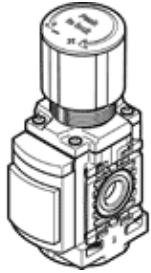


# pressure regulator MS4-LR-1/4-D6-AG-MPA-B

Part number: 8099359

★ Core product range

FESTO



## Data sheet

Feature	Value
Size	4
Series	MS
Actuator lock	Rotary knob with lock
Assembly position	Any
Design structure	Pressure regulator with gauge directly-controlled piston regulator
Controller function	Output pressure constant with secondary exhaust with return flow
Unit(s) that can be displayed	MPa
Pressure gauge	with pressure gauge
Operating pressure MPa	0.1 ... 1 MPa
Operating pressure	1 ... 10 bar
Pressure regulation range	0.3 ... 7 bar
Max. pressure hysteresis (MPa)	0.05 MPa
Max. pressure hysteresis	0.5 bar 7.25 psi
Standard nominal flow rate	1,800 l/min
Operating medium	Compressed air in accordance with ISO8573-1:2010 [7:4:4] Inert gases
Note on operating and pilot medium	Lubricated operation possible (subsequently required for further operation)
Corrosion resistance classification CRC	1 - Low corrosion stress
PWIS conformity	VDMA24364-B1/B2-L
Cleanroom class	ISO class 7
Storage temperature	-5 ... 50 °C
Medium temperature	-5 ... 50 °C
Ambient temperature	-5 ... 50 °C
Product weight	165 g
Mounting type	Front panel installation Line installation with accessories Optional
Pneumatic connection, port 1	G1/4
Pneumatic connection, port 2	G1/4
Materials note	Conforms to RoHS
Material underneath cover	PA
Material seals	NBR
Material rotary knob	POM
Material spring	High alloy steel Galvanised steel
Material housing	PA-reinforced
Material valve stem	POM