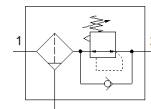


filter regulator

MS6-LFR-1/2-D6-C-P-M-A8-B

Part number: 8098301

FESTO



Data sheet

Feature	Value
Size	6
Series	MS
Actuator lock	Rotary knob with lock
Assembly position	Vertical +/- 5°
Grade of filtration	5 µm
Condensate drain	manual rotary
Design structure	Filter regulator without pressure gauge directly-controlled piston regulator
Max. condensate volume	27.3 ml
Controller function	Output pressure constant with secondary exhaust with return flow
Pressure gauge	Prepared for G1/8
Operating pressure MPa	0.1 ... 1 MPa
Operating pressure	1 ... 10 bar
Pressure regulation range	0.3 ... 7 bar
Max. pressure hysteresis (MPa)	0.035 MPa
Max. pressure hysteresis	0.35 bar 5.075 psi
Standard nominal flow rate	4,750 l/min
Operating medium	Compressed air in accordance with ISO8573-1:2010 [7:4:4] Inert gases
Note on operating and pilot medium	Compatibility with ester oil not guaranteed
Corrosion resistance classification CRC	1 - Low corrosion stress
PWIS conformity	VDMA24364-B1/B2-L
Cleanroom class	ISO class 7
Storage temperature	-5 ... 50 °C
Air purity class at output	Compressed air in accordance with ISO8573-1:2010 [6:4:4]
Medium temperature	-5 ... 50 °C
Ambient temperature	-5 ... 50 °C
Product weight	578 g
Mounting type	Front panel installation Line installation with accessories Optional
Pneumatic connection, port 1	G1/2
Pneumatic connection, port 2	G1/2
Materials note	Conforms to RoHS
Material seals	NBR
Material rotary knob	POM
Material spring	High alloy steel Galvanised steel
Material filter	PE
Material housing	PA-reinforced
Material bowl	PC
Material valve stem	POM