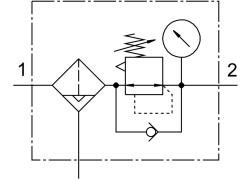


Filter regulator MS4-LFR-1/4-D6-C-P-VC-AG-BAR-B

Part number: 8098259

FESTO



Data sheet

| Feature | Value |
|---|---|
| Size | 4 |
| Series | MS |
| Actuator lock | Rotary knob with detent |
| Mounting position | Vertical $\pm 5^\circ$ |
| Grade of filtration | 5 μm |
| Condensate drain | Fully automatic Manual, non-detenting |
| Design | Filter regulator with pressure gauge Directly actuated piston regulator |
| Max. condensate volume | 16.5 ml |
| Controller function | Output pressure constant With secondary venting With return flow function |
| Displayable units | bar psi |
| Pressure gauge (ANALOG) or Pressure display (DIGITAL) | With pressure gauge |
| Operating pressure | 0.2 MPa...1 MPa 2 bar...10 bar |
| Pressure regulation range | 0.3 bar...7 bar |
| Max. pressure hysteresis | 0.05 MPa 0.5 bar 7.25 psi |
| Standard nominal flow rate | 1500 l/min |
| Operating medium | Compressed air to ISO 8573-1:2010 [7:4:4] Inert gases |
| Corrosion resistance class CRC | 1 - Low corrosion stress |
| LABS (PWIS) conformity | VDMA24364-B1/B2-L |
| Cleanroom class | Class 7 according to ISO 14644-1 |
| Storage temperature | -5 $^\circ\text{C}$...50 $^\circ\text{C}$ |
| Air purity class at output | Compressed air to ISO 8573-1:2010 [6:4:4] |
| Media temperature | 5 $^\circ\text{C}$...50 $^\circ\text{C}$ |
| Ambient temperature | 5 $^\circ\text{C}$...50 $^\circ\text{C}$ |
| Product weight | 216 g |

| Feature | Value |
|------------------------------|---|
| Type of mounting | Either: Front panel mounting In-line installation With accessories |
| Pneumatic connection, port 1 | G1/4 |
| Pneumatic connection, port 2 | G1/4 |
| Note on materials | RoHS-compliant |
| Material seals | NBR |
| Material rotary knob | POM |
| Material spring | High-alloy steel Galvanised steel |
| Material filter | PE |
| Material housing | PA-reinforced |
| Material bowl | PC |
| Material valve stem | POM |