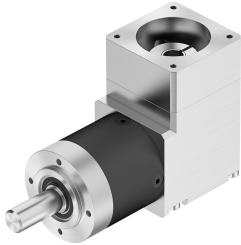


Gear unit EMGA-40-A-G3-40P

Part number: 8085342

FESTO



Data sheet

Feature	Value
Gear unit flange size	40 mm
Motor flange size	40 mm
Torsional backlash	0.35 deg
Type of gear unit	Right-angle gear unit
Gear unit ratio	3:1
Max. drive speed	18000 rpm
Operating temperature of gear unit	-25 °C...90 °C
LABS (PWIS) conformity	VDMA24364-B2-L
Degree of protection	IP54
Continuous output torque	4.5 Nm
Mass moment of inertia of gear unit	0.049 kgcm ²
Max. output torque	7 Nm
Max. efficiency	95 %
Torsional rigidity	0.8 Nm/arcmin
Product weight	500 g
Gear unit interface, output shaft	40G
Gear unit interface, drive shaft	40P
Note on materials	RoHS-compliant