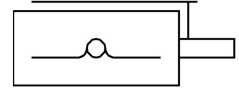
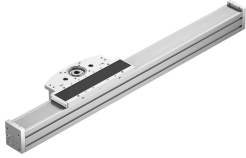


Cantilever axis ELCC-TB-KF-90-300-0H-P0-CR

Part number: 8082400

FESTO



Data sheet

Feature	Value
Effective diameter of drive pinion	50.93 mm
Working stroke	300 mm
Size	90
Stroke reserve	0 mm
Toothed-belt pitch	5 mm
Mounting position	optional
Guide	Recirculating ball bearing guide
Design	Electromechanical cantilever axis
Max. acceleration	30 m/s ²
Max. speed	5 m/s
Repetition accuracy	±0.05 mm
Corrosion resistance class CRC	0 - No corrosion stress
LABS (PWIS) conformity	VDMA24364 zone III
Degree of protection	IP20
Ambient temperature	-10 °C...60 °C
2nd moment of area Iy	2667900 mm ⁴
2nd moment of area Iz	2049490 mm ⁴
Max. drive torque	33 Nm
Max. force Fy	13957 N
Max. force Fz	13523 N
Max. moment Mx	167 Nm
Max. moment My	1300 Nm
Max. moment Mz	1233 Nm
Max. feed force Fx	1200 N
Mass moment of inertia JH per metre of stroke	62.9 kgcm ²
Mass moment of inertia JL per kg of working load	6.5 kgcm ²
Mass moment of inertia JO	55.2 kgcm ²
Feed constant	160 mm/U
Reference service life	5000 km
Lubrication interval dependent on operating distance	1000 km
Moving mass for 0 mm stroke	5487 g

Feature	Value
Additional moving mass per 10 mm stroke	97 g
Basic weight for 0 mm stroke	14787 g
Additional weight per 10 mm stroke	97 g
Material end cap	Anodised wrought aluminium alloy
Material profile	Anodised wrought aluminium alloy
Note on materials	RoHS-compliant
Material drive head	Anodised wrought aluminium alloy
Material guide rail	Rolled steel, Corrotect coated
Material housing	High-alloy stainless steel
Material slide	Anodised die-cast aluminium
Material toothed belt clamping piece	Anodised wrought aluminium alloy
Material toothed belt	Polychloroprene with glass filament and nylon coating