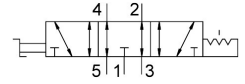


# Hand lever valve VHEF-H-B53E-N14

Part number: 8080949

FESTO



## Data sheet

| Feature   | Value  |
|---|--|
| Valve function  | 5/3 exhausted  |
| Type of actuation                                     | Manual   |
| Construction width                                    | 20 mm  |
| Standard nominal flow rate (standardised to DIN 1343) | 750 l/min  |
| pneumatic working port                                | 1/4 NPT  |
| Operating pressure                                    | -0.095 MPa...1 MPa<br>-0.95 bar...10 bar   |
| Design  | Piston gate valve  |
| Nominal size  | 7 mm   |
| Exhaust-air function                                  | With flow control option   |
| Instructions on use                                   | Actuate manually only  |
| Sealing principle                                     | Soft   |
| Mounting position                                     | optional   |
| Manual override                                       | Detenting  |
| Type of piloting                                      | Direct   |
| Flow direction  | Reversible   |
| lap   | Overlap  |
| Max. switching frequency                              | 0.5 Hz   |
| Explosion protection                                  | Zone 1 (ATEX)<br>Zone 2 (ATEX)<br>Zone 21 (ATEX)<br>Zone 22 (ATEX)                         |
| Operating medium                                      | Compressed air to ISO 8573-1:2010 [7:-:-]  |
| Note on operating and pilot medium                    | Lubricated operation possible (in which case lubricated operation will always be required) |
| Corrosion resistance class CRC                        | 1 - Low corrosion stress   |
| LABS (PWIS) conformity                                | VDMA24364-B1/B2-L  |
| Media temperature                                     | -10 °C...60 °C   |
| Ambient temperature                                   | -10 °C...60 °C   |
| Actuating torque                                      | 0.7 Nm   |
| Unlocking torque                                      | 0.6 Nm   |
| Max. force on actuation                               | 200 N  |
| Max. lateral force on actuation                       | 200 N  |

| <b>Feature</b>               | <b>Value</b>   |
|------------------------------|--|
| Product weight               | 298 g  |
| Type of mounting             | Either:<br>Front panel mounting<br>With through-hole |
| Pneumatic connection, port 1 | 1/4 NPT  |
| Pneumatic connection, port 2 | 1/4 NPT  |
| Pneumatic connection, port 3 | 1/4 NPT  |
| Pneumatic connection, port 4 | 1/4 NPT  |
| Pneumatic connection, port 5 | 1/4 NPT  |
| Note on materials            | RoHS-compliant                                       |
| Material cover               | PA-reinforced  |
| Material seals               | NBR  |
| Material housing             | Anodised wrought aluminium alloy                     |
| Material lever               | PA-reinforced  |