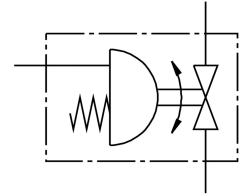


# Ball valve actuator unit VZBM-A-1/2" -RP-25-D-2-B2-PB20

Part number: 8070244

FESTO



## Data sheet

Feature	Value
Design	2-way ball valve Semi-rotary drive
Type of actuation	Pneumatic
Mounting position	optional
Type of mounting	In-line installation
Connection Process valve	Rp1/2
Switching position indicator	Slot direction = flow direction
Nominal size DN	15
Operating pressure	5.5 bar...8 bar
Nominal pressure PN	25
Medium	Compressed air to ISO 8573-1:2010 [-:~:] Inert gases Water – no water vapour Neutral fluids
Operating medium	Compressed air to ISO 8573-1:2010 [7:4:4]
Note on operating and pilot medium	Dew point at least 10 °C below the ambient temperature and temperature of the medium Lubricated operation possible (in which case lubricated operation will always be required)
Media temperature	-15 °C...90 °C
Ambient temperature	-20 °C...80 °C
Flow rate Kv	15 m <sup>3</sup> /h
Note on materials	RoHS-compliant
LABS (PWIS) conformity	VDMA24364 zone III
Material housing	Brass, nickel-plated
Material number housing	CW617N
Material seals	FPM HNBR PTFE
Material ball	Brass, chrome-plated
Material number ball	CW614N
Material shaft	Brass
Material number shaft	CW614N

<b>Feature</b>	<b>Value</b>
Product weight	1363 g
Corrosion resistance class CRC	1 - Low corrosion stress