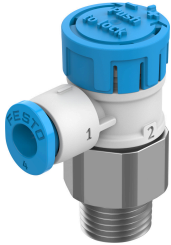


One-way flow control valve VFOE-LE-T-R18-Q4

Part number: 8068734

FESTO



Data sheet

Feature	Value
Valve function	Exhaust air one-way flow control function
Pneumatic connection, port 1	QS-4
Pneumatic connection, port 2	R1/8
Type of actuation	Manual
Adjustment component	Rotary knob with detent
Type of mounting	Screw-in
Standard nominal flow rate in flow control direction	150 l/min
Standard nominal flow rate in blocked direction	90 l/min...150 l/min
Ambient temperature	-10 °C...60 °C
Material housing	PBT
Explosion protection	The information in the certificate must be observed! Zone 1 (ATEX) Zone 2 (ATEX) Zone 21 (ATEX) Zone 22 (ATEX)
Mounting position	optional
Width across flats	13 mm
Rotatability	360°/no continuous swivelling permissible
Operating pressure complete temperature range	0.02 MPa...1 MPa 0.2 bar...10 bar 2.9 psi...145 psi
Standard flow rate in flow control direction 0.6->0 MPa (6->0 bar, 87->0 psi)	250 l/min
Standard flow rate in non-return direction 0.6->0 MPa (6->0 bar, 87->0 psi)	240 l/min...300 l/min
Operating medium	Compressed air to ISO 8573-1:2010 [7:4:4]

Feature	Value
Note on operating and pilot medium	Lubricated operation possible (in which case lubricated operation will always be required)
LABS (PWIS) conformity	VDMA24364 zone III
Cleanroom class	Class 4 according to ISO 14644-1
Media temperature	-10 °C...60 °C
Product weight	9.5 g
Note on materials	RoHS-compliant
Material cover	PBT
Material dynamic seals	HNBR
Material threaded bolt	Galvanised steel
Material release ring	PBT
Material static seals	NBR