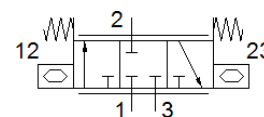


piezo valve

VEMP-BS-3-13-D19-F-28T1-P30

Part number: 8065735

FESTO



Data sheet

| Feature | Value |
|---|---|
| Container size | 30 |
| Note on degree of protection | Depending on the connection block |
| Standard nominal flow rate | 28 l/min |
| Standard nominal flow rate 2-3 | 29 l/min |
| Flow direction | non reversible |
| Nominal operating pressure | 1.7 bar |
| Operating pressure | 0 ... 1.7 bar |
| Valve function | 2/2 closed, monostable 3/3-way, closed, monostable |
| Nominal size | 1.3 mm |
| Type of actuation | electrical |
| Pneumatic connection, port 1 | Flange |
| Pneumatic connection, port 2 | Flange |
| Pneumatic connection, port 3 | Flange |
| Medium | Inert gases Air Oxygen (oxygen applications to IEC 60601-1 only on request) Nitrogen |
| Special characteristics | Oxygen-compatible to DIN EN 1797 |
| Operating medium | Compressed air to ISO 8573-1:2010 [5:3:1] |
| Note on operating and pilot medium | Lubricated operation not possible |
| Grade of filtration | ≤ 5 μm |
| Relative air humidity | 0 - 70 % non-condensing |
| Pressure dew point | ≤ -20 °C |
| Max. switching frequency | 5 Hz |
| Medium temperature | 0 ... 50 °C |
| Ambient temperature | 0 ... 50 °C |
| Storage temperature | -20 ... 70 °C |
| Nominal operating voltage DC | 310 V |
| Operating voltage range DC | 0 ... 310 V |
| Max. current consumption | 5 mA |
| Max. electrical power consumption | 1 mW |
| Product weight | 8 g |
| Material seals | EPDM |
| Material housing | PA-reinforced |
| Material cover | PA-reinforced |
| Materials note | Conforms to RoHS |
| Grid dimension | 17.2 mm |
| Dimensions W x L x H | 17,2 mm x 52,1 mm x 7,2 mm |
| Mounting type | on manifold rail On sub-base |
| Assembly position | Any |
| CE mark (see declaration of conformity) | to EU directive low-voltage devices |
| PWIS conformity | VDMA24364-B2-L |