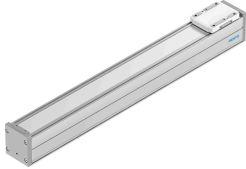


Guide axis ELFC-KF-80-600

Part number: 8062829

FESTO



Data sheet

Feature	Value
Working stroke	600 mm
Size	80
Stroke reserve	0 mm
Mounting position	optional
Guide	Recirculating ball bearing guide
Design	Guidance
Max. acceleration	500 m/s ²
Max. speed	1.5 m/s
Duty cycle	100%
Corrosion resistance class CRC	0 - No corrosion stress
LABS (PWIS) conformity	VDMA24364 zone III
Suitability for the production of Li-ion batteries	Metals with more than 1% copper, zinc or nickel by mass are excluded from use. Exceptions are nickel in steel, chemically nickel-plated surfaces, printed circuit boards, cables, electrical plug connectors and coils
Cleanroom class	Class 7 according to ISO 14644-1
Degree of protection	IP40
Ambient temperature	0 °C...50 °C
2nd moment of area ly	1370000 mm ⁴
2nd moment of area lz	1660000 mm ⁴
Max. force Fy	900 N
Max. force Fz	2700 N
Max. moment Mx	59.8 Nm
Max. moment My	56.2 Nm
Max. moment Mz	56.2 Nm
Torsional mass moment of inertia It	90500 mm ⁴
Displacement force	15 N
Fy at theoretical life value of 100 km (only guide consideration)	3312 N
Fz at theoretical life value of 100 km (only guide consideration)	9936 N
Mx at theoretical life value of 100 km (only guide consideration)	220 Nm
My at theoretical life value of 100 km (only guide consideration)	207 Nm
Mz at theoretical life value of 100 km (only guide consideration)	207 Nm

Feature	Value
Moving mass	815 g
Additional weight per 10 mm stroke	73 g
Material end cap	Painted die cast aluminium
Material profile	Anodised wrought aluminium alloy
Note on materials	RoHS-compliant
Material cover tape	High-alloy stainless steel
Material cover	Painted die-cast aluminium
Material guide slide	Steel
Material guide rail	Steel
Material slide	Die-cast aluminium