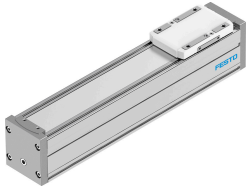


Guide axis ELFC-KF-60-200

Part number: 8062813

FESTO



Data sheet

Feature	Value
Working stroke	200 mm
Size	60
Stroke reserve	0 mm
Mounting position	optional
Guide	Recirculating ball bearing guide
Design	Guidance
Max. acceleration	500 m/s ²
Max. speed	1.5 m/s
Duty cycle	100%
Corrosion resistance class CRC	0 - No corrosion stress
LABS (PWIS) conformity	VDMA24364 zone III
Suitability for the production of Li-ion batteries	Metals with more than 1% copper, zinc or nickel by mass are excluded from use. Exceptions are nickel in steel, chemically nickel-plated surfaces, printed circuit boards, cables, electrical plug connectors and coils
Cleanroom class	Class 7 according to ISO 14644-1
Degree of protection	IP40
Ambient temperature	0 °C...50 °C
2nd moment of area ly	441000 mm ⁴
2nd moment of area lz	542000 mm ⁴
Max. force Fy	600 N
Max. force Fz	1800 N
Max. moment Mx	29.1 Nm
Max. moment My	31.8 Nm
Max. moment Mz	31.8 Nm
Torsional mass moment of inertia It	29800 mm ⁴
Displacement force	6.75 N
Fy at theoretical life value of 100 km (only guide consideration)	2208 N
Fz at theoretical life value of 100 km (only guide consideration)	6624 N
Mx at theoretical life value of 100 km (only guide consideration)	107 Nm
My at theoretical life value of 100 km (only guide consideration)	117 Nm
Mz at theoretical life value of 100 km (only guide consideration)	117 Nm

Feature	Value
Moving mass	407 g
Additional weight per 10 mm stroke	43 g
Material end cap	Painted die cast aluminium
Material profile	Anodised wrought aluminium alloy
Note on materials	RoHS-compliant
Material cover tape	High-alloy stainless steel
Material cover	Painted die-cast aluminium
Material guide slide	Steel
Material guide rail	Steel
Material slide	Die-cast aluminium