

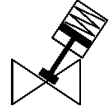
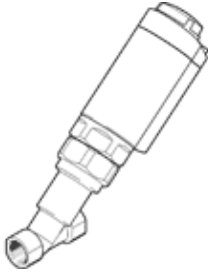
# angle seat valve

## VZX-B-TS7-3/4"-M2-V14T-12.8-K-46-17-V4

Part number: 8060542

FESTO

Modular, pneumatically actuated angle seat valve in stainless steel.  
Under seat version, safety position closed, NPT thread, nominal width  
3/4".



### Data sheet

| Feature                                   | Value  |
|---|--|
| Design structure                          | Poppet valve with piston actuator  |
| Type of actuation                         | pneumatic  |
| Assembly position                         | Any  |
| Mounting type                             | Line installation  |
| Line connection                           | Threaded coupling 3/4 NPT to ANSI/ASME B 1.20.1  |
| Valve function                            | 2/2  |
| Flow direction                            | non reversible   |
| Pressure of medium                        | 0 ... 1.28 MPa   |
| Medium pressure                           | 0 ... 12.8 bar   |
| Type of reset                             | mechanical spring  |
| Type of piloting                          | With external control  |
| Pneumatic connection                      | Female thread G1/8   |
| Operating pressure MPa                    | 0.5 ... 1 MPa  |
| Operating pressure                        | 5 ... 10 bar<br>72.5 ... 145 psi   |
| Medium                                    | Vapour<br>Mineral oil-based hydraulic oil<br>Inert gases<br>Mineral oil<br>Water<br>Filtered compressed air, degree of filtration 200 µm<br>Neutral fluids |
| Flow direction                            | Below valve seat, for gaseous and liquid media   |
| Control of the medium                     | On/off operation   |
| Operating medium                          | Compressed air in accordance with ISO8573-1:2010 [7:4:4]   |
| Max. viscosity                            | 600 mm <sup>2</sup> /s   |
| Medium temperature                        | -10 ... 180 °C   |
| Ambient temperature                       | 0 ... 60 °C  |
| Flow rate Kv                              | 13.3 m <sup>3</sup> /h   |
| Outdoor use                               | C1 - weather protected locations of use  |
| Materials note                            | Conforms to RoHS   |
| PWIS conformity                           | VDMA24364 zone III   |
| Material process valve housing            | Stainless steel casting  |
| Material number, process valve housing    | ASTM A351-CF3M   |
| Material seals                            | FPM  |
| Material spindle seal                     | PTFE   |
| Material seat seal                        | PTFE   |
| Product weight                            | 1,910 g  |
| Authorisation                             | CRN  |
| Certificate issuing department            | TÜV 968/V 1039.01/20   |
| Safety Integrity Level (SIL)              | SIL 2  |
| Probability of Failure per Hour in [1/h]. | 1.36E-07   |
| PFD (Probability of Failure on Demand)    | 5.95E-04   |

| <b>Feature</b>                    | <b>Value</b>                    |
|-----------------------------------|---------------------------------|
| Actuator size                     | 46 mm                           |
| Stroke                            | 17 mm                           |
| Control function                  | Closed via spring force, NC     |
| Position detection                | With mechanical indicator       |
| Material drive housing            | Stainless steel casting         |
| Material number, actuator housing | 1.4408                          |
| Storage temperature               | -10 ... 60 °C                   |
| Protection class                  | IP65<br>IP67                    |
| Material piston rod               | High alloy steel, non-corrosive |
| Material cover                    | Stainless steel casting         |