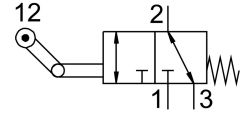


Roller lever valve VMEF-KT-M32-M-N14

Part number: 8047107

FESTO



Data sheet

Feature	Value
Valve function	3/2-way, single solenoid
Type of actuation	Mechanical
Construction width	20 mm
Standard nominal flow rate	870 l/min
pneumatic working port	1/4 NPT
Operating pressure	-0.095 MPa...1 MPa -0.95 bar...10 bar
Design	One-way roller lever with idle return Poppet seat
Type of reset	Mechanical spring
Max. stroke limit (hard)	11 mm
Nominal size	6 mm
Instructions on use	Risk of pinching
Sealing principle	Soft
Mounting position	optional
Type of piloting	Direct
Flow direction	Reversible
lap	Zero overlap
Max. actuating speed with lateral actuation	0.7 m/s
Max. switching frequency	3 Hz
Cam angle	30 deg
Explosion protection	Zone 1 (ATEX) Zone 2 (ATEX) Zone 21 (ATEX) Zone 22 (ATEX)
Operating medium	Compressed air to ISO 8573-1:2010 [7:-:-]
Note on operating and pilot medium	Lubricated operation possible (in which case lubricated operation will always be required)
Corrosion resistance class CRC	1 - Low corrosion stress
LABS (PWIS) conformity	VDMA24364-B1/B2-L
Media temperature	-10 °C...60 °C
Ambient temperature	-10 °C...60 °C
Note on ambient temperature	Influence of heat on wear

Feature	Value
Actuating force	32.7 N
Product weight	218 g
Type of mounting	With through-hole
Pneumatic connection, port 1	1/4 NPT
Pneumatic connection, port 2	1/4 NPT
Pneumatic connection, port 3	1/4 NPT
Note on materials	RoHS-compliant
Material mounting adaptor	Galvanised steel
Material seals	NBR
Material housing	Anodised wrought aluminium alloy