

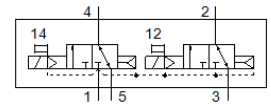
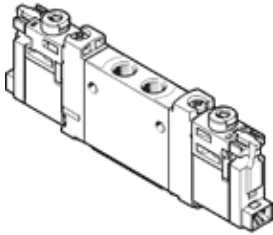
solenoid valve

VUVG-LK10-T32C-AT-M5-1H2L-S

Part number: 8042538

★ Core product range

FESTO



Data sheet

| Feature | Value |
|---|--|
| Valve function | 2x3/2 closed, monostable |
| Type of actuation | electrical |
| Valve size | 10 mm |
| Standard nominal flow rate | 180 l/min |
| Operating pressure MPa | 0.15 ... 0.7 MPa |
| Operating pressure | 1.5 ... 7 bar |
| Design structure | Piston slide with sealing ring |
| Type of reset | Air spring |
| Authorisation | c UL us - Recognized (OL) |
| Certificate issuing department | UL MH19482 |
| Protection class | IP40 |
| Exhaust-air function | throttleable |
| Sealing principle | soft |
| Assembly position | Any |
| Manual override | detenting Pushing |
| Type of piloting | Piloted |
| Pilot air supply | Internal |
| Flow direction | non reversible |
| Overlap | Positive overlap |
| Signal status display | LED |
| Max. switching frequency | 2 Hz |
| Switching time off | 14 ms |
| Switching time on | 12 ms |
| Duty cycle | 100 % |
| Max. positive test pulse with logic 0 | 1,600 µs |
| Max. negative test pulse with logic 1 | 3,000 µs |
| Characteristic coil data | 24 V DC: 0.8 W |
| Permissible voltage fluctuation | +/- 10 % |
| Operating medium | Compressed air in accordance with ISO8573-1:2010 [7:4:4] |
| Note on operating and pilot medium | Lubricated operation possible (subsequently required for further operation) |
| Vibration resistance | Transport application test with severity level 1 as per FN 942017-4 and EN 60068-2-6 |
| Shock resistance | Shock test with severity level 1 in accordance with FN 942017-5 and EN 60068-2-27 |
| Corrosion resistance classification CRC | 0 - No corrosion stress |
| PWIS conformity | VDMA24364 zone III |
| Medium temperature | -5 ... 50 °C |
| Pilot medium | Compressed air in accordance with ISO8573-1:2010 [7:4:4] |
| Ambient temperature | -5 ... 50 °C |
| Product weight | 55 g |
| Electrical connection | 2-pin Connection pattern H, horizontal connection Plug |
| Mounting type | on manifold rail |

| Feature | Value |
|------------------------------|-------------------------|
| | with through hole |
| Pneumatic connection, port 2 | M5 |
| Pneumatic connection, port 4 | M5 |
| Materials note | Conforms to RoHS |
| Material seals | HNBR NBR |
| Material housing | Wrought Aluminium alloy |