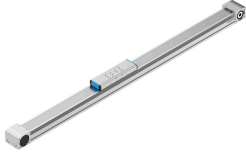


# Toothed belt axis ELGA-TB-KF-120-1500-0H

Part number: 8041870

FESTO



## Data sheet

Feature	Value
Effective diameter of drive pinion	52.52 mm
Working stroke	1500 mm
Size	120
Stroke reserve	0 mm
Toothed-belt stretch	0.21 %
Toothed-belt pitch	5 mm
Mounting position	optional
Guide	Recirculating ball bearing guide
Design	Electromechanical linear axis With toothed belt
Type of motor	Stepper motor Servo motor
Functional principle of measuring system	Incremental
Max. acceleration	50 m/s <sup>2</sup>
Max. speed	5 m/s
Repetition accuracy	±0.08 mm
Duty cycle	100%
LABS (PWIS) conformity	VDMA24364 zone III
Degree of protection	IP40
Ambient temperature	-10 °C...60 °C
2nd moment of area Iy	1264580 mm <sup>4</sup>
2nd moment of area Iz	4365790 mm <sup>4</sup>
Max. drive torque	34.1 Nm
Max. force Fy	5500 N
Max. force Fz	6890 N
Max. idle running transfer resistance	76.2 N
Max. moment Mx	104 Nm
Max. moment My	680 Nm
Max. moment Mz	680 Nm
Max. feed force Fx	1300 N
Frictional torque independent of load	2.8 Nm
Torsional mass moment of inertia It	435680 mm <sup>4</sup>

<b>Feature</b>	<b>Value</b>
Mass moment of inertia JH per metre of stroke	2.15 kgcm <sup>2</sup>
Mass moment of inertia JL per kg of working load	6.9 kgcm <sup>2</sup>
Mass moment of inertia JO	40.99 kgcm <sup>2</sup>
Mass moment of inertia JW for additional slide	28.91 kgcm <sup>2</sup>
Feed constant	165 mm/U
Lubrication interval dependent on operating distance	1000 km
Weight of slide	4,19 kg
Weight of additional slide	3,24 kg
Basic weight for 0 mm stroke	15,7 kg
Additional weight per 10 mm stroke	0,106 kg
Material profile	Wrought aluminium alloy Anodised
Note on materials	RoHS-compliant
Material cover tape	Stainless steel strip
Material drive cover	Wrought aluminium alloy Anodised
Material guide slide	Tempered steel
Material guide rail	Tempered steel Corroprotect coated
Material pulleys	High-alloy stainless steel
Material slide	Wrought aluminium alloy Anodised
Material toothed belt clamping piece	Stainless steel casting
Material toothed belt	Polychloroprene with glass filament and nylon coating