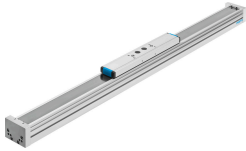


Guide axis ELFA-RF-70- -

Part number: 8037967

FESTO



Data sheet

Feature	Value
Working stroke	50 mm...7000 mm
Size	70
Mounting position	optional
Guide	Roller bearing guide
Design	Guidance
Max. acceleration	50 m/s ²
Max. speed	10 m/s
Corrosion resistance class CRC	0 - No corrosion stress
LABS (PWIS) conformity	VDMA24364 zone III
Degree of protection	IP40
Ambient temperature	-10 °C...60 °C
2nd moment of area Iy	139140 mm ⁴
2nd moment of area Iz	433100 mm ⁴
Max. force Fy	500 N
Max. force Fz	500 N
Max. idle running transfer resistance	25 N
Max. moment Mx	11 Nm
Lubrication interval dependent on operating distance	10000 km
Basic weight for 0 mm stroke	1921 g
Additional weight per 10 mm stroke	30.54 g
Type of mounting	With accessories
Material profile	Wrought aluminium alloy Anodised
Note on materials	RoHS-compliant
Material cover tape	Stainless steel strip
Material guide	Steel
Material slide	Wrought aluminium alloy Anodised