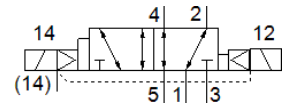


solenoid valve

VSVA-B-D52-Z-D1-1T1L

Part number: 8034837

FESTO



Data sheet

Feature	Value
Valve function	5/2 bistable-dominant
Type of actuation	electrical
Width	42 mm
Standard nominal flow rate	1,300 l/min
Operating pressure MPa	-0.09 ... 1 MPa
Operating pressure	-0.9 ... 10 bar
Design structure	Piston slide
Authorisation	c UL us - Recognized (OL)
Protection class	IP65 NEMA 4
Exhaust-air function	throttleable Via throttle plate Via individual sub-base
Sealing principle	soft
Assembly position	Any
Manual override	Covered
Type of piloting	Piloted
Pilot air supply	external
Flow direction	Any
Signal status display	LED
Pilot pressure MPa	0.3 ... 1 MPa
Pilot pressure	3 ... 10 bar
Flow rate of valve	1,800 l/min
Flow rate of valve on individual sub-base	1,500 l/min
Optimised flow rate of valve pneumatically concatenated flow	1,860 l/min
Flow rate of pneumatically linked valve	1,300 l/min
Switching time reversal	19 ms
Max. positive test pulse with logic 0	1,600 µs
Max. negative test pulse with logic 1	1,100 µs
Nominal breakaway current per solenoid coil	72 mA up to 30 ms
Characteristic coil data	24 V DC: 1.3 W
Surge strength	2.5 kV
Degree of contamination	3
Permissible voltage fluctuation	+/- 10 %
Operating medium	Compressed air in accordance with ISO8573-1:2010 [7:4:4]
Note on operating and pilot medium	Lubricated operation possible (subsequently required for further operation)
Vibration resistance	Transport application test at severity level 2 in accordance with FN 942017-4 and EN 60068-2-6
Shock resistance	Shock test with severity level 2 in accordance with FN 942017-5 and EN 60068-2-27
Corrosion resistance classification CRC	0 - No corrosion stress
PWIS conformity	VDMA24364-B1/B2-L
Relative air humidity	0 - 90 %
Ambient temperature	-5 ... 50 °C
Product weight	439 g

Feature	Value
Electrical connection	Plug-in as per ISO 5599-2
Mounting type	On sub-base
Auxiliary pilot air port 12/14	Sub-base size 1 to ISO 5599-2
Pilot exhaust port 82/84	Optional Not ducted as per standard Ducted
Pneumatic connection, port 1	Sub-base size 1 to ISO 5599-2
Pneumatic connection, port 2	Sub-base size 1 to ISO 5599-2
Pneumatic connection, port 3	Sub-base size 1 to ISO 5599-2
Pneumatic connection, port 4	Sub-base size 1 to ISO 5599-2
Pneumatic connection, port 5	Sub-base size 1 to ISO 5599-2
Materials note	Conforms to RoHS
Material seals	FPM HNBR NBR
Material housing	Aluminium die cast PA
Material screws	Galvanised steel