

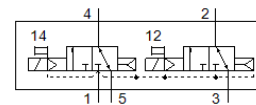
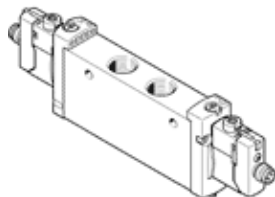
solenoid valve

VUVG-L18-T32C-AT-G14-1R8L

Part number: 8031525

★ Core product range

FESTO



Data sheet

Feature	Value
Valve function	2x3/2 closed, monostable
Type of actuation	electrical
Valve size	18 mm
Standard nominal flow rate	880 l/min
Operating pressure MPa	0.15 ... 0.8 MPa
Operating pressure	1.5 ... 8 bar
Design structure	Piston slide
Type of reset	Air spring
Authorisation	RCM Mark c UL us - Recognized (OL)
Protection class	IP65 with plug socket
Nominal size	5.7 mm
Exhaust-air function	throttleable
Sealing principle	soft
Assembly position	Any
Manual override	detenting Pushing Covered
Type of piloting	Piloted
Pilot air supply	Internal
Overlap	Positive overlap
Pilot pressure MPa	0.15 ... 0.8 MPa
Pilot pressure	1.5 ... 8 bar
Switching time off	27 ms
Switching time on	13 ms
Duty cycle	100 %
Max. positive test pulse with logic 0	700 µs
Max. negative test pulse with logic 1	900 µs
Characteristic coil data	24 V DC: 1 W
Permissible voltage fluctuation	+/- 10 %
Operating medium	Compressed air in accordance with ISO8573-1:2010 [7:4:4]
Note on operating and pilot medium	Lubricated operation possible (subsequently required for further operation)
Vibration resistance	Transport application test at severity level 2 in accordance with FN 942017-4 and EN 60068-2-6
Restriction ambient and medium temperature	Without holding current reduction -5 - 50 °C
Shock resistance	Shock test with severity level 2 in accordance with FN 942017-5 and EN 60068-2-27
Corrosion resistance classification CRC	2 - Moderate corrosion stress
PWIS conformity	VDMA24364-B1/B2-L
Medium temperature	-5 ... 60 °C
Ambient temperature	-5 ... 60 °C
Product weight	164 g
Electrical connection	Via electrical connection plate

Feature	Value
Mounting type	on manifold rail with through hole Optional
Pneumatic connection, port 1	G1/4
Pneumatic connection, port 2	G1/4
Pneumatic connection, port 3	G1/4
Pneumatic connection, port 4	G1/4
Pneumatic connection, port 5	G1/4
Materials note	Conforms to RoHS
Material seals	HNBR NBR
Material housing	Wrought Aluminium alloy