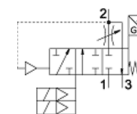
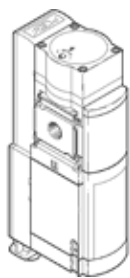


soft-start/quick exhaust valve MS6-SV-1/2-E-ASIS-AG

Part number: 8001480

FESTO



Data sheet

Feature	Value
Series	MS
Size	6
Grid dimension	62 mm
Safety function	Exhausting Prevention of unexpected start-up (pressurisation)
Safety Integrity Level (SIL)	Exhausting / SIL 3 Prevention of unexpected start-up (pressurisation)/SIL 3
Performance level (PL)	Vent/up to Category 4, PL e Prevention of unexpected start-up (pressurisation)/up to category 4, Performance Level e
Note on forced dynamisation	Switching frequency min. 1/month
Design structure	Piston seat
Freedom from overlap	No
Type of actuation	electrical
Pilot air supply	Internal
Sealing principle	soft
Exhaust-air function	not throttleable
Position sensing principle	Solenoid actuator principle
Conforms to standard	DIN EN ISO 13849-1
Manual override	None
Type of reset	mechanical spring
Type of piloting	Piloted
Valve function	3/2 closed, monostable Pressure build-up function
Operating pressure	3.5 ... 10 bar
Pressure gauge	with pressure gauge
C value	19.3 l/sbar
b value	0.21
Standard nominal flow rate	4,300 l/min
Standard flow rate for exhaust 6->0 bar	9,000 l/min
Max. switching frequency	1 Hz
Switching time off	40 ms
Switching time on	130 ms
Duty cycle	100 %
Signal status display	LED via AS-i
Operating medium	Compressed air in accordance with ISO8573-1:2010 [7:4:4]
Note on operating and pilot medium	Lubricated operation possible (subsequently required for further operation)
Corrosion resistance classification CRC	2 - Moderate corrosion stress
Materials note	Conforms to RoHS
Protection class	IP65 with plug socket
Medium temperature	0 ... 50 °C
Ambient temperature	0 ... 50 °C
Storage temperature	0 ... 50 °C

Feature	Value
Shock resistance	Shock test with severity level 2 in accordance with FN 942017-5 and EN 60068-2-27
Vibration resistance	Transport application test at severity level 2 in accordance with FN 942017-4 and EN 60068-2-6
Authorisation	RCM Mark
KC mark	KC-EMV
CE mark (see declaration of conformity)	to EU directive for EMC to EU directive for machinery
Certificate issuing department	TÜV 44 799 12 556236 000
Food-safe	See Supplementary material information
Mounting type	Line installation with accessories Optional
Assembly position	Any
Product weight	2,000 g
Pneumatic connection, port 1	G1/2
Pneumatic connection, port 2	G1/2
Pneumatic connection, port 3	G1
Electrical connection	2x M12
Product ID	ID-Code: 0x5 ID1: 0xF ID2: 0x5 IO-Code: 0x7 Profile: 7.5.5
Vendor ID AS-interface	0x014D
Device ID AS-interface	0x03A6
Fieldbus interface	Socket, M12 (ASI Out) Plug connector, M12 (ASI In)
Device-specific diagnostics	Cyclical digital data inputs Cyclical analogue values Acyclic values
DC operating voltage, AS interface	22 ... 31.6 V
Addressing range	Standard Slave: 1 ... 31
LED displays	AS-i Status
Material housing	Aluminium die cast
Material seals	NBR
Material piston rod	High alloy steel, non-corrosive