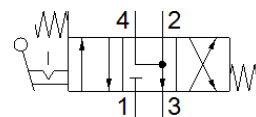
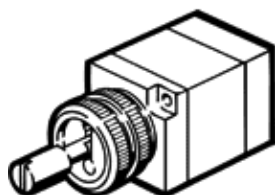


finger lever valve

H-4/3-M5

Part number: 7334

FESTO



Data sheet

Feature	Value
Valve function	4/3 exhausted
Type of actuation	manual
Standard nominal flow rate	125 l/min
Operating pressure	0 ... 8 bar
Type of reset	mechanical spring
Nominal size	4 mm
Sealing principle	soft
Type of piloting	Piloted
Flow direction	non reversible
PWIS conformity	VDMA24364-B1/B2-L
Pneumatic connection, port 1	M5
Pneumatic connection, port 2	M5
Pneumatic connection, port 3	Non-ducted