

# stem actuated valve

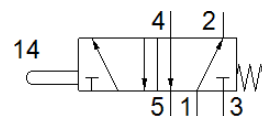
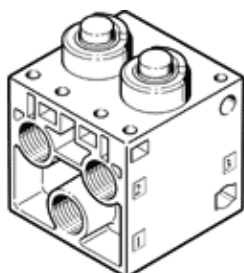
## V-5-1/4-B

Part number: 6809

FESTO

Normally closed.

This type is suitable for vacuum. Vacuum connection at port 1 (P).



## Data sheet

| Feature                      | Value              |
|------------------------------|--------------------|
| Valve function               | 5/2 monostable     |
| Type of actuation            | mechanical         |
| Standard nominal flow rate   | 550 l/min          |
| Operating pressure           | -0.95 ... 10 bar   |
| Design structure             | Poppet seat        |
| Nominal size                 | 7 mm               |
| Type of piloting             | direct             |
| PWIS conformity              | VDMA24364-B1/B2-L  |
| Ambient temperature          | -10 ... 60 °C      |
| Actuating force              | 182 N              |
| Product weight               | 240 g              |
| Mounting type                | with through hole  |
| Pneumatic connection, port 1 | G1/4               |
| Pneumatic connection, port 2 | G1/4               |
| Pneumatic connection, port 3 | G1/4               |
| Pneumatic connection, port 4 | G1/4               |
| Pneumatic connection, port 5 | G1/4               |
| Material seals               | NBR                |
| Material housing             | Aluminium die cast |