

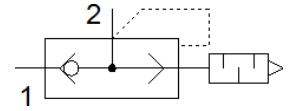
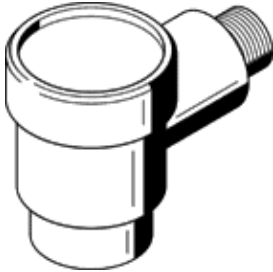
quick exhaust valve SEU-1/4

Part number: 6753

FESTO

With built-in silencer.

The exhaust noise level is measured at 6 bar to atmosphere at 1 m distance.



Data sheet

Feature	Value
Valve function	Quick exhaust
Pneumatic connection, port 1	G1/4
Pneumatic connection, port 2	G1/4
Mounting type	Threaded
Standard nominal flow rate, exhaust 0.6-→0.5 MPa (6-→5 bar, 87-→72.5 psi)	1,100 l/min
Standard flow rate exhaust 0.6-→0 MPa (6-→0 bar, 87-→0 psi)	2,300 l/min
Standard nominal flow rate pressurisation 0.6-→0.5 MPa (6-→5 bar, 87-→72.5 psi)	960 l/min
Operating pressure	0.5 ... 10 bar
Ambient temperature	-20 ... 75 °C
Material housing	Zinc die-casting
Operating medium	Compressed air in accordance with ISO8573-1:2010 [7:-:-]
Nominal size	7 mm
Assembly position	Any
Note on operating and pilot medium	Lubricated operation possible (subsequently required for further operation)
PWIS conformity	VDMA24364-B1/B2-L
Medium temperature	-20 ... 75 °C
Sound pressure level	95 dB(A)
Product weight	120 g
Material seals	NBR