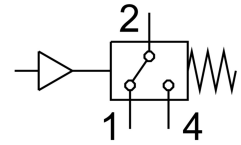
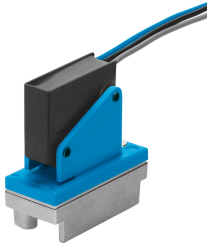


PE converter PE-1/8-1N-SW

Part number: 6484

FESTO



Data sheet

Feature	Value
Conforms to standard	EN 60947-5-1
CE mark (see declaration of conformity)	To EU Low Voltage Directive
CE marking (see declaration of conformity)	To UK regulations for electrical equipment
Measured variable	Relative pressure
Measurement method	Pneumatic/electric pressure transducer
Operating pressure	0 MPa...0.8 MPa 0 bar...8 bar
Max. overload pressure	12 bar
Operating medium	Compressed air to ISO 8573-1:2010 [7:4:4]
Note on operating and pilot medium	Lubricated operation possible
Media temperature	0 °C...60 °C
Ambient temperature	0 °C...60 °C
Switching output	Contacting
Switching function	Threshold value with fixed hysteresis
Switching element function	Changeover switch
Switch-on point max.	2 bar
Switch-off point min.	0.5 bar
Max. switching frequency	1 Hz
Min. load current	100 mA
Operational voltage range AC	12 V...250 V
Operational voltage range DC	12 V...250 V
Utilisation category - inductive load	AC-14 DC-13
Utilisation category - resistive load	AC-12 DC-12
Electrical connection	3 connector leads
Electrical connection 1, connector system	Open end
Cable length	0.5 m
Material cable sheath	PVC
Type of mounting	Either: On 1n mounting frame With through-hole
Mounting position	optional

Feature	Value
Pneumatic connection	G1/8
Product weight	50 g
Material housing	Die-cast aluminium PA-reinforced Steel VMQ (silicone)
Material switch contact	Silver
Material electrical connection	Tin-plated
Material membrane	TPE-U(PU)
Setting options	Permanently set
Degree of protection	IP67
Insulation voltage	2 kV
LABS (PWIS) conformity	VDMA24364-B1/B2-L
Pollution degree	3