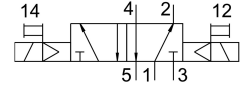
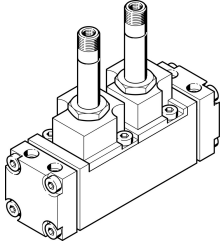


# Solenoid valve CJM-5/2-1/2-FH

Part number: 6228

FESTO



## Data sheet

Feature	Value
Valve function	5/2 double solenoid
Type of actuation	Electric
pneumatic working port	Sub-base
Operating pressure	1.5 bar...8 bar
Type of piloting	Pilot actuated
LABS (PWIS) conformity	VDMA24364 zone III
Pneumatic connection, port 1	Sub-base
Pneumatic connection, port 2	Sub-base
Pneumatic connection, port 3	Sub-base
Pneumatic connection, port 4	Sub-base
Pneumatic connection, port 5	Sub-base