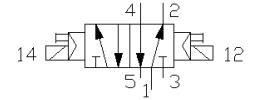
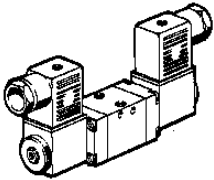


Double JMFH-5-3,3

Part number: 6069

FESTO



Datasheet

Feature	Value
A1 Switching function symbol	S5A
A2 Switching function short code	5/2
A2B Direction of flow reversible	nein
A3 Operational principle	Sitz
A3A Form operating component	Teller
A6 Type of control	indirekt
A7 Type of setting	bistabil
E1A Connection type power ports	Platte
E1B Working port ducted exhaust	ja
E1C Connection type pilot pressure ventil.	Intern
E1D Connection type pilot pressure exhaust	Gewinde
E62 Thread type (pilot air exhaust)	M
E63 Thread diameter (metr.)	5 mm
G1 Actuation/Reset	E08:E08
J3 LABS criterion	frei
N Magnetic system (sizing)	F(X)