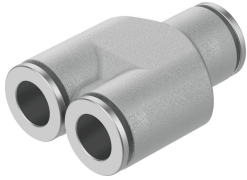


Push-in Y-connector NPQH-Y-Q8-Q6-P10

Part number: 578414

FESTO



Data sheet

Feature	Value
Size	Standard
Nominal size	5.5 mm
Tubing insertion depth	15.8 mm...16 mm
Note on the tubing insertion depth	Ø6 depth 15.8 mm Ø8 depth 16 mm
Mounting position	optional
Design	Y-shape Push-pull principle
Size of pack	10
Operating pressure complete temperature range	-0.095 MPa...2 MPa -0.95 bar...20 bar -13.775 psi...290 psi
Note on operating pressure	Water: max. 0.6 MPa at 0 - 50 °C
Certificate issuing authority	NSF C0523185
Operating medium	Compressed air to ISO 8573-1:2010 [7:-:-] Water (liquid, ice-free)
Note on operating and pilot medium	Lubricated operation possible
Corrosion resistance class CRC	3 - high corrosion stress
LABS (PWIS) conformity	VDMA24364-B1/B2-L
Cleanroom class	Class 4 according to ISO 14644-1
Suitable for use with food	See declaration of conformity NSF/ANSI 169
Ambient temperature	0 °C...150 °C
Product weight	52.6 g
Pneumatic connection, port 1	For tubing outer diameter of 8 mm
Pneumatic connection, port 2	For tubing outside diameter of 6 mm
Note on materials	RoHS-compliant
Material housing	Brass, chemically nickel-plated
Guard ring material	PEI
Material release ring	Brass, chemically nickel-plated
Material tubing seal	FPM

Feature	Value
Material tubing clamp component	High-alloy stainless steel
Thrust ring material	PEI