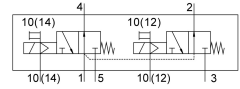


# Solenoid valve VUVS-LT20-T32U-MZD-G18-F7

Part number: 577501

FESTO



## Data sheet

| Feature                                | Value                                                                                      |
|----------------------------------------|--------------------------------------------------------------------------------------------|
| Valve function                         | 2x3/2-way, open, monostable                                                                |
| Type of actuation                      | Electric                                                                                   |
| Valve size                             | 21 mm                                                                                      |
| Standard nominal flow rate             | 600 l/min                                                                                  |
| pneumatic working port                 | G1/8                                                                                       |
| Operating pressure                     | -0.09 MPa...1 MPa<br>-0.9 bar...10 bar                                                     |
| Design                                 | Poppet seat                                                                                |
| Type of reset                          | Mechanical spring                                                                          |
| Approval                               | c UL us - Recognized (OL)                                                                  |
| Nominal size                           | 5.2 mm                                                                                     |
| Exhaust-air function                   | With flow control option                                                                   |
| Sealing principle                      | Soft                                                                                       |
| Mounting position                      | optional                                                                                   |
| Manual override                        | Detenting<br>Non-detenting                                                                 |
| Type of piloting                       | Pilot actuated                                                                             |
| Pilot air supply                       | External                                                                                   |
| Flow direction                         | Non-reversible                                                                             |
| lap                                    | Underlap                                                                                   |
| Pilot pressure                         | 0.25 MPa...1 MPa<br>2.5 bar...10 bar                                                       |
| b value                                | 0.29                                                                                       |
| C value                                | 2.3 l/sbar                                                                                 |
| Switching time off                     | 23 ms                                                                                      |
| Switching time on                      | 9 ms                                                                                       |
| Max. positive test pulse with 0 signal | 1900 µs                                                                                    |
| Max. negative test pulse with 1 signal | 2700 µs                                                                                    |
| Operating medium                       | Compressed air to ISO 8573-1:2010 [7:4:4]                                                  |
| Note on operating and pilot medium     | Lubricated operation possible (in which case lubricated operation will always be required) |
| Vibration resistance                   | Transport application test with severity level 2 to FN 942017-4 and EN 60068-2-6           |

| Feature                        | Value                                                             |
|--------------------------------|-------------------------------------------------------------------|
| Shock resistance               | Shock test with severity level 2 to FN 942017-5 and EN 60068-2-27 |
| Corrosion resistance class CRC | 2 - Moderate corrosion stress                                     |
| LABS (PWIS) conformity         | VDMA24364-B1/B2-L                                                 |
| Media temperature              | -10 °C...60 °C                                                    |
| Pilot medium                   | Compressed air to ISO 8573-1:2010 [7:4:4]                         |
| Ambient temperature            | -5 °C...60 °C                                                     |
| Product weight                 | 180 g                                                             |
| Type of mounting               | Either:<br>On manifold rail<br>With through-hole                  |
| Breather connection            | Not ducted                                                        |
| Pilot exhaust port 82          | M5                                                                |
| Pilot exhaust port 84          | M5                                                                |
| Pilot air port 12              | M5                                                                |
| Pilot air port 14              | M5                                                                |
| Pneumatic connection, port 1   | G1/8                                                              |
| Pneumatic connection, port 2   | G1/8                                                              |
| Pneumatic connection, port 3   | G1/8                                                              |
| Note on materials              | RoHS-compliant                                                    |
| Material seals                 | HNBR<br>NBR<br>TPE-U(PU)                                          |
| Material housing               | Die-cast aluminium<br>Painted                                     |
| Material screws                | Galvanised steel                                                  |